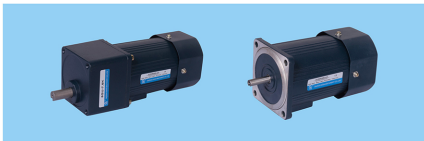


# MICRO AC GEAR MOTOR SERIES

## 90/120W

□ 90×90mm



### Motor Technical Parameters

	Motor with gear shaft		Power W	Voltage V	Frequency Hz	Current A	Starting torque mN.m	Rated Torque mN.m	Rated Speed rpm	Rated Time min	Capacitor μF/VA
	motor with gear shaft	motor with gear shaft									
Infection motor	SIK90/120A-A	SIK90/120GU-A	90/120	1PH110	50	1.70	630	890	1300	Continuous	24/250
	SIK90/120A-C	SIK90/120GU-C	90/120	1PH020	60	1.63	525	750	1500		
	SIK90/120A-S	SIK90/120GU-S	90/120	3PH020	50	0.80	630	890	1300	Continuous	6.0/450
	SIK90/120A-U	SIK90/120GU-U	90/120	3PH080	60	0.72	525	750	1500		
	SIK90/120A-B	SIK90/120GU-B	90/120	3PH020	50	0.59	1650	900	1300		
Resistor motor	SIK90/120A-A	SIK90/120GU-A	90/120	1PH110	60	1.63	590	780	1500	30	30/250
	SIK90/120A-C	SIK90/120GU-C	90/120	1PH020	50	0.85	700	900	1300	30	8.0/450
	SIK90/120A-S	SIK90/120GU-S	90/120	3PH020	60	0.82	590	780	1500		
Duck motor	SIK90/120A-AM	SIK90/120GU-AM	90/120	1PH110	60	1.63	590	780	1500	30	30/250
	SIK90/120A-CM	SIK90/120GU-CM	90/120	1PH020	50	0.95	700	900	1300	30	8.0/450
	SIK90/120A-SM	SIK90/120GU-SM	90/120	3PH020	60	0.62	1650	900	1300		
	SIK90/120A-UM	SIK90/120GU-UM	90/120	3PH080	60	0.54	1650	780	1500		
	SIK90/120A-DM	SIK90/120GU-DM	90/120	3PH080	50	0.38	1650	900	1300	30	
SIK90/120A-EM	SIK90/120GU-EM	90/120	3PH080	60	0.32	1650	780	1500			

	Motor with gear shaft		Power W	Voltage V	Frequency Hz	Starting torque mN.m	Speed Control Range %	Rated Torque mN.m		Rated Time min	Capacitor μF/VA
	motor with gear shaft	motor with gear shaft						120rpm	50rpm		
Inverter motor	SIK90/120RA-A	SIK90/120RGU-A	90/120	1PH110	50	630	90-1400	900	315	Continuous	24/250
	SIK90/120RA-C	SIK90/120RGU-C	90/120	1PH020	60	525	90-1600	900	315		
	SIK90/120RA-S	SIK90/120RGU-S	90/120	3PH020	50	630	90-1400	900	315	Continuous	6.0/450
SIK90/120RA-U	SIK90/120RGU-U	90/120	3PH080	60	525	90-1600	900	315			

### Allowable load for the gear motor

Reduction ratio	3		5		7.5		10		12.5		15		18		20		25		30		36		40		50		60		75		90		100		120		150		180		200		250		300	
	min	max	min	max	min	max	min	max	min	max	min	max	min	max	min	max	min	max	min	max	min	max	min	max	min	max	min	max	min	max	min	max	min	max	min	max	min	max	min	max	min	max				
50Hz/90W	1.7	2.8	4.3	5.6	7.0	8.5	10.0	11.8	13.8	16.5	19.5	22.0	22.0	22.0	22.0	22.0	22.0	22.0	22.0	22.0	22.0	22.0	22.0	22.0	22.0	22.0	22.0	22.0	22.0	22.0	22.0	22.0	22.0	22.0	22.0	22.0	22.0	22.0	22.0	22.0	22.0	22.0	22.0	22.0	22.0	
	550	330	220	165	132	110	92	83	66	50	46	42	33	26	22	18	16	14	11	9	8	6.6	5.5																							
60Hz/90W	1.4	2.3	3.5	4.6	5.8	6.90	8.2	9.2	11.0	13.3	16	17.5	18.5	20.0	22.0	22.0	22.0	22.0	22.0	22.0	22.0	22.0	22.0	22.0	22.0	22.0	22.0	22.0	22.0	22.0	22.0	22.0	22.0	22.0	22.0	22.0	22.0	22.0	22.0	22.0	22.0	22.0	22.0	22.0	22.0	
	500	300	200	150	120	100	83	75	60	50	41.6	37.5	30	25	20	16.6	15	12.5	10	8.3	7.5	6	5																							
50Hz/120W	1.92	3.8	5.6	7.1	9.2	11.2	14.2	15.0	17.6	20.8	22.0	22.0	22.0	22.0	22.0	22.0	22.0	22.0	22.0	22.0	22.0	22.0	22.0	22.0	22.0	22.0	22.0	22.0	22.0	22.0	22.0	22.0	22.0	22.0	22.0	22.0	22.0	22.0	22.0	22.0	22.0	22.0	22.0	22.0	22.0	
	550	330	220	165	132	110	92	83	66	50	46	42	33	26	22	18	16	14	11	9	8	6.6	5.5																							
60Hz/120W	1.67	3.1	4.6	6.1	7.7	9.2	11.5	12.3	14.7	17.7	18.7	20.0	22.0	22.0	22.0	22.0	22.0	22.0	22.0	22.0	22.0	22.0	22.0	22.0	22.0	22.0	22.0	22.0	22.0	22.0	22.0	22.0	22.0	22.0	22.0	22.0	22.0	22.0	22.0	22.0	22.0	22.0	22.0	22.0	22.0	22.0

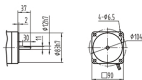
051-36512626

www.kalasanatisafaei.com



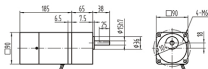
OUTLINE DIMENSION SHEET

Motors



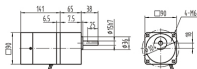
Brake Motors

SIK90/120GU-□MF+5GU□KB



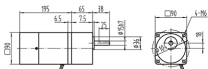
Speed Constant(Control) Motors

SIK90/120GU-□IRIF+5GU□K



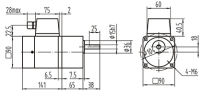
Speed Control & brake Motors

SIK90/120GU-□MRF+5GU□KB

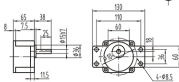


Terminal Box Type Motors

SIK90/120GU-□TF+5GU□KB



5GU□K (60W,90W,120W)



90

