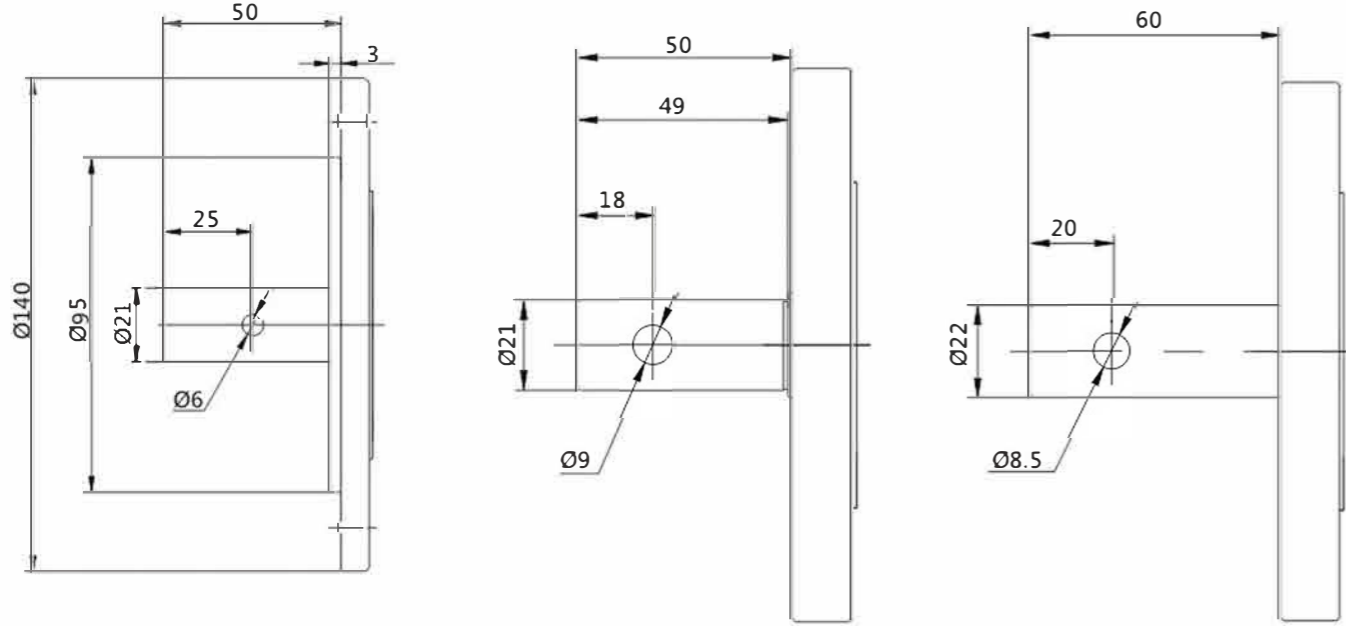
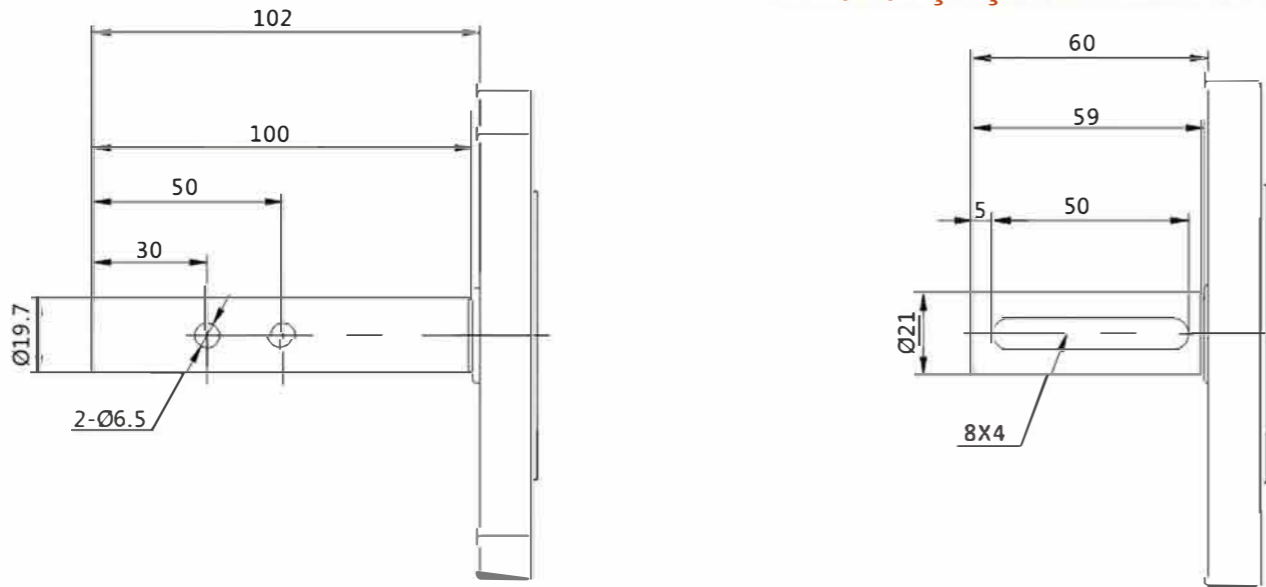


## Çıkış Milleri

### 01 Delikli Çıkış Mili

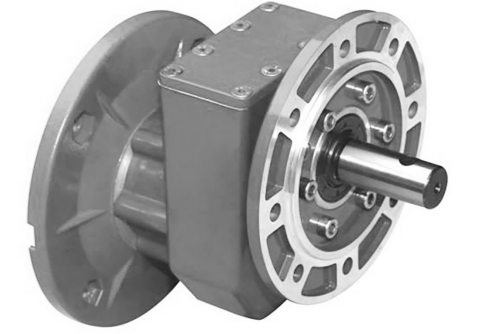


### 02 Kamalı Çıkış Mili



### 03 Özel Çıkış Mili

## TAVUKÇU REDÜKTÖRÜ



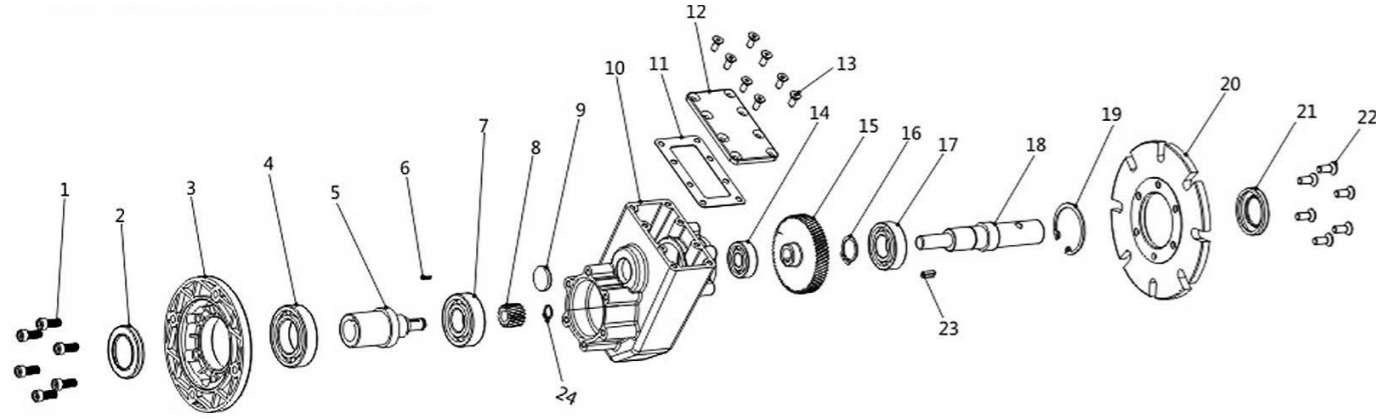
PU

PU Serisi redüktörler, kümes hayvanı çiftliklerinde yemleme sistemleri için özel olarak tasarlanmıştır. Alüminyum gövde olarak helisel dişli olarak tasarlanmıştır.

### Model Bilgisi

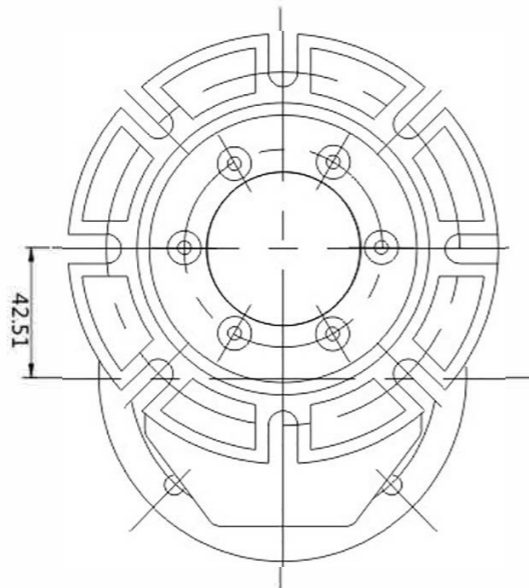
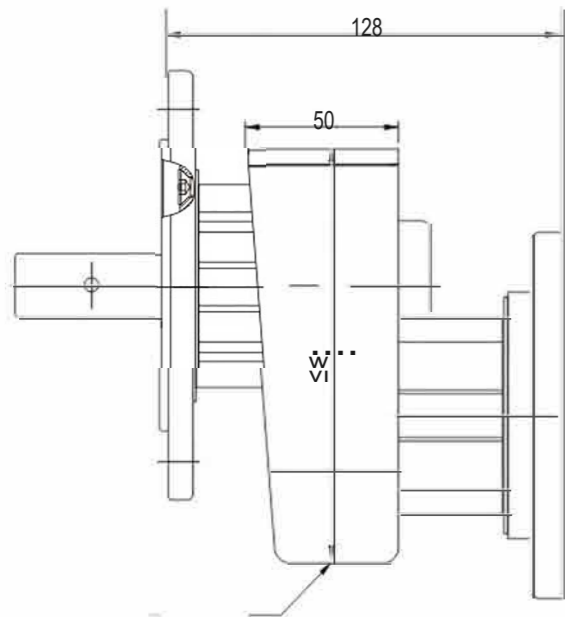
#### PU-3.93-63B5 - FT-01

- 01 : Delikli çıkış mili
- 02 : Kamalı çıkış mili
- 03 : Özel çıkış mili
- FT: Standart Çıkış Flanş FQ Özel Çıkış Flanşı
- Giriş Flanşı(63B5, 71B14, 71B5, 80814, 80B5, 56C, 140C)
- Tahvil(=1.58, 1.91, 2.35, 2.5, 3.00, 3.19, 3.79, 3.93, 4.75, 5.09, 5.70, 7.38, 7.88, 8.57)
- Tip



NO	
1	Civata
2	Keçe
3	Giriş Flanşı
4	Rulman
5	Giriş Mili
6	Kama
7	Rulman
8	Giriş Dişlisi
9	Kapak
10	Gövde
11	Pul
12	Gövde kapağı
13	Civata

NO	
14	Rulman
15	Dişli
16	Mil segmanı
17	Rulman
18	Çıkış Dişlisi
19	Delik segmanı
20	Çıkış flanşı
21	Çıkış keçesi
22	Civata
23	Kama
24	Mil segmanı
25	O-Ring



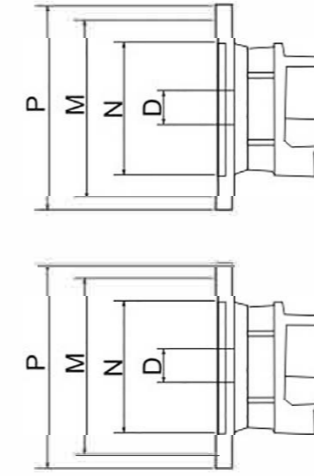
### Giriş Flanşı

#### IEC Motor Flanşları

TİP	IEC	N	M	P	D
PU	71B14	70	85	105	14
	80B14	80	100	120	19
	63B5	95	115	140	11
	71B5	110	130	160	14
	80B5	130	165	200	19

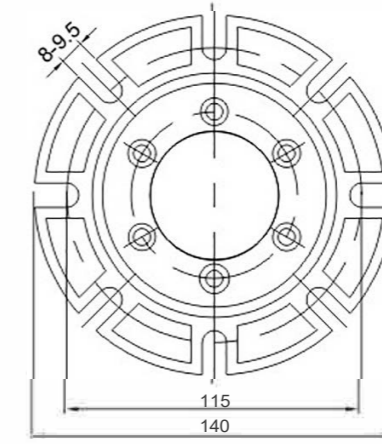
#### Nema Motor Flanşları

TİP	IEC	N	M	P	D
PU	56C	4.5	5.88	6.5	0.625

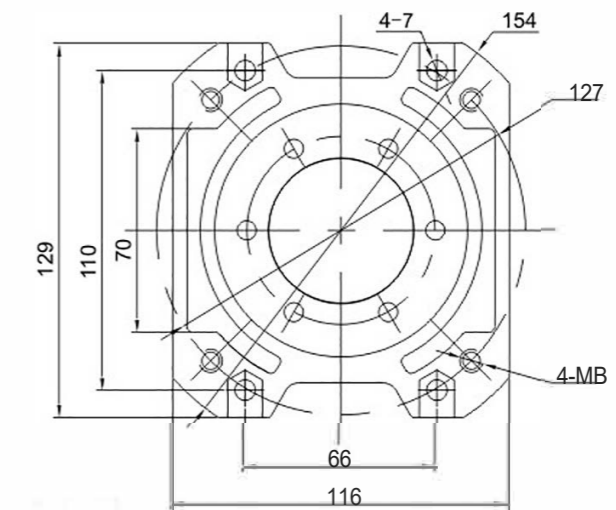


### Çıkış Flanşı

FT



FQ



### [IEC-50Hz-n, 1400min<sup>-1</sup>]

P <sub>1</sub> [kW]	n <sub>2</sub> [min <sup>-1</sup> ]	M <sub>2</sub> [Nm]	sf	i			
<b>0.25 KW</b>							
71A4 (1400min <sup>-1</sup> )	888	2.6	15.3	1.58	PU01	B5/B14	
	732	3.2	12.6	1.91		B5/B14	
	596	3.9	10.3	2.35		B5/B14	
	560	4.1	9.7	2.50		B5/B14	
	467	5.0	10.1	3.00		D5/D14	
	439	5.3	9.5	3.19		B5/B14	
	370	6.3	8.0	3.79		B5/B14	
	356	6.5	7.7	3.93		B5/B14	
	295	7.9	6.4	4.75		B5/B14	
	275	8.4	5.9	5.09		B5/B14	
	246	9.4	5.3	5.70		B5/B14	
	190	12	3.3	7.38		B5/B14	
	178	13	3.1	7.88		B5/B14	
	163	14	2.8	8.57		B5/B14	
<b>0.37 KW</b>							
71B4 (1400min <sup>-1</sup> )	888	3.9	10.4	1.58		PU01	B5/B14
	732	4.7	8.5	1.91	B5/B14		
	596	5.8	7.0	2.35	B5/B14		
	560	6.1	6.5	2.50	B5/B14		
	467	7.3	6.8	3.00	B5/B14		
	439	7.8	6.4	3.19	B5/B14		
	370	9.3	5.4	3.79	B5/B14		
	356	10	5.2	3.93	B5/B14		
	295	12	4.3	4.75	B5/B14		
	275	12	4.0	5.09	B5/B14		
	246	14	3.6	5.70	B5/B14		
	190	18	2.2	7.38	B5/B14		
	178	19	2.1	7.88	B5/B14		
	163	21	1.9	8.57	B5/B14		
<b>0.55 KW</b>							
71C4 (1400min <sup>-1</sup> )	888	5.7	7.0	1.58	PU01		B5/B14
	732	7.0	5.7	1.91		B5/B14	
	596	8.6	4.7	2.35		B5/B14	
	560	9.1	4.4	2.50		B5/B14	
	467	11	4.6	3.00		B5/B14	
	439	12	4.3	3.19		B5/B14	
	370	14	3.6	3.79		B5/B14	
	356	14	3.5	3.93		B5/B14	
	295	17	2.9	4.75		B5/B14	
	275	19	2.7	5.09		B5/B14	
	246	21	2.4	5.70		B5/B14	
	190	27	1.5	7.38		B5/B14	
	178	29	1.4	7.88		B5/B14	
	163	31	1.3	8.57		B5/B14	

### [NEMA-50Hz-n, 1400min<sup>-1</sup>]

P <sub>1</sub> (HP)	n <sub>2</sub> (rpm)	M <sub>2</sub> (N.m)	sf	i	
<b>1/4 HP</b>					
1/4 (56C/1700rpm)	1076	1.5	19.8	1.58	
	890	1.8	16.4	1.91	
	723	2.3	13.3	2.35	
	680	2.4	12.5	2.50	
	567	2.9	10.4	3.00	
	533	3.1	13.1	3.19	
	449	3.6	11.0	3.79	
	433	3.8	10.6	3.93	
	399	4.1	9.8	4.26	
	358	4.6	8.8	4.75	
	334	4.9	8.2	5.09	
<b>1/3 HP</b>					
1/3 (56C/1700rpm)	1076	2.1	14.2	1.58	
	890	2.5	11.8	1.91	
	723	3.1	9.6	2.35	
	680	3.3	9.0	2.50	
	567	4.0	7.5	3.00	
	533	4.3	9.4	3.19	
	449	5.1	7.9	3.79	
	433	5.2	7.6	3.93	
	399	5.7	7.0	4.26	
	358	6.3	6.3	4.75	
	334	6.8	5.9	5.09	
<b>1/2 HP</b>					
1/2 (56C/1700rpm)	1076	3.1	9.6	1.58	
	890	3.8	8.0	1.91	
	723	4.6	6.5	2.35	
	680	4.9	6.1	2.50	
	567	5.9	5.1	3.00	
	533	6.3	6.4	3.19	
	449	7.5	5.3	3.79	
	433	7.8	5.2	3.93	
	399	8.4	4.8	4.26	
	358	9.4	4.3	4.75	
	334	10.1	4.0	5.09	
<b>3/4 HP</b>					
3/4 (56C/1700rpm)	1076	4.6	6.5	1.58	
	890	5.6	5.4	1.91	
	723	6.9	4.3	2.35	
	680	7.3	4.1	2.50	
	567	8.8	3.4	3.00	
	533	9.4	4.3	3.19	
	449	11.1	3.6	3.79	
	433	11.5	3.5	3.93	
	399	12.5	3.2	4.26	
	358	13.9	2.9	4.75	
	334	14.9	2.7	5.09	
<b>1 HP</b>					
1 (56C/1700rpm)	1076	6.3	4.7	1.58	
	890	7.6	3.9	1.91	
	723	9.4	3.2	2.35	
	680	10.0	3.0	2.50	
	567	12.0	2.5	3.00	
	533	12.8	3.1	3.19	
	449	15.2	2.6	3.79	
	433	15.7	2.5	3.93	
	399	17.1	2.3	4.26	
	358	19.0	2.1	4.75	
	334	20.4	2.0	5.09	
<b>1 1/2 HP</b>					
1 1/2 (56C/1700rpm)	1076	9.3	3.2	1.58	
	890	11.2	2.7	1.91	
	723	13.8	2.2	2.35	
	680	14.7	2.0	2.50	
	567	17.6	1.7	3.00	
	533	18.7	2.1	3.19	
	449	22.2	1.8	3.79	
	433	23.1	1.7	3.93	
	399	25.0	1.6	4.26	
	358	27.9	1.4	4.75	
	334	29.9	1.3	5.09	