



ZHEJIANG TAIFU PUMP CO.,LTD

Add: 5, Longmen Road, East Industry Center, Wenling, Zhejiang, China P.C: 317511

Tel: 0086-576-8631 2865

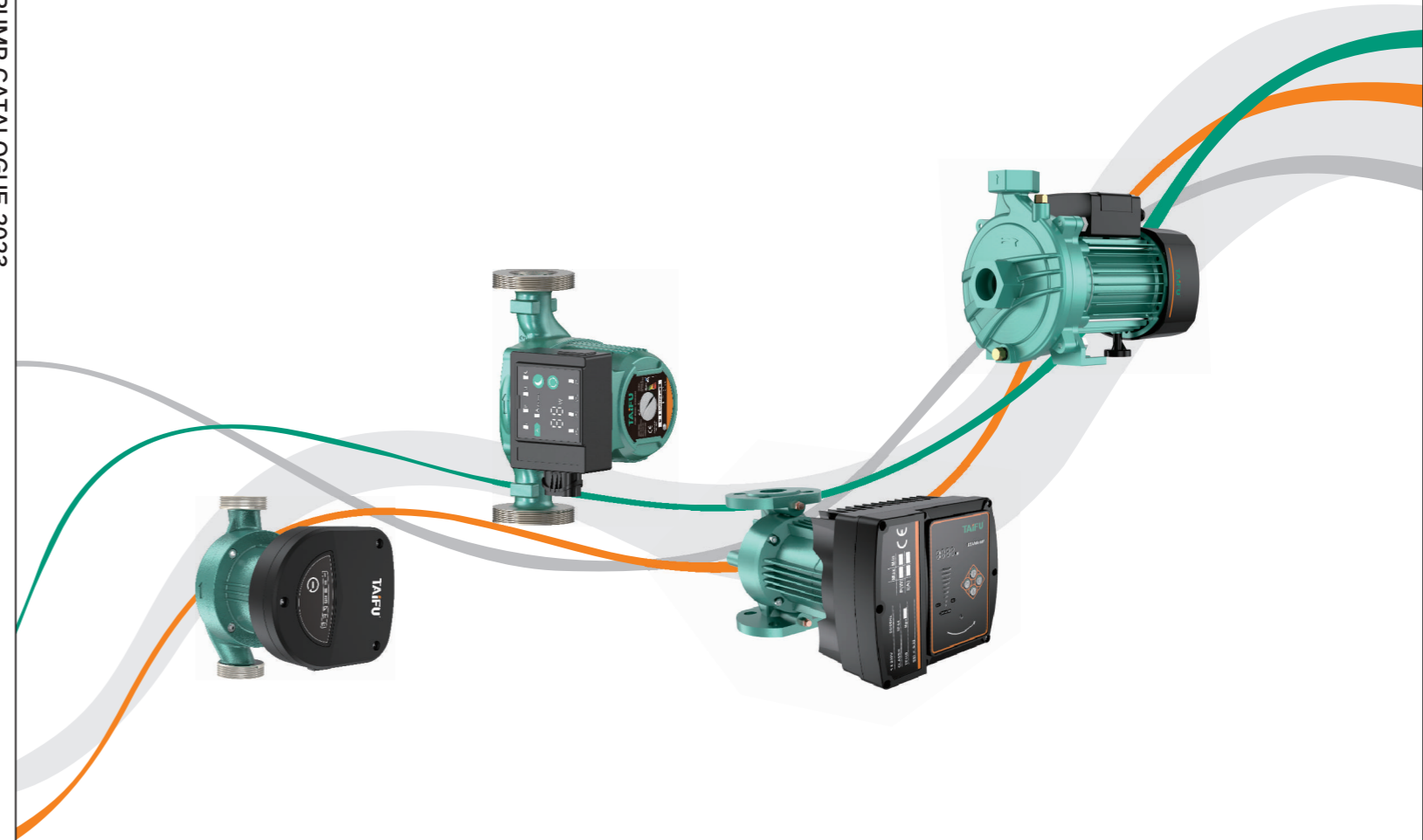
E-mail: chen@chinataifu.com



TAIFU[®]

Energy Saving Pump

IPO STOCK NO.300992



CIRCULATOR PUMP CATALOGUE 50HZ

COMPANY PROFILE



Listed Company



Full Range



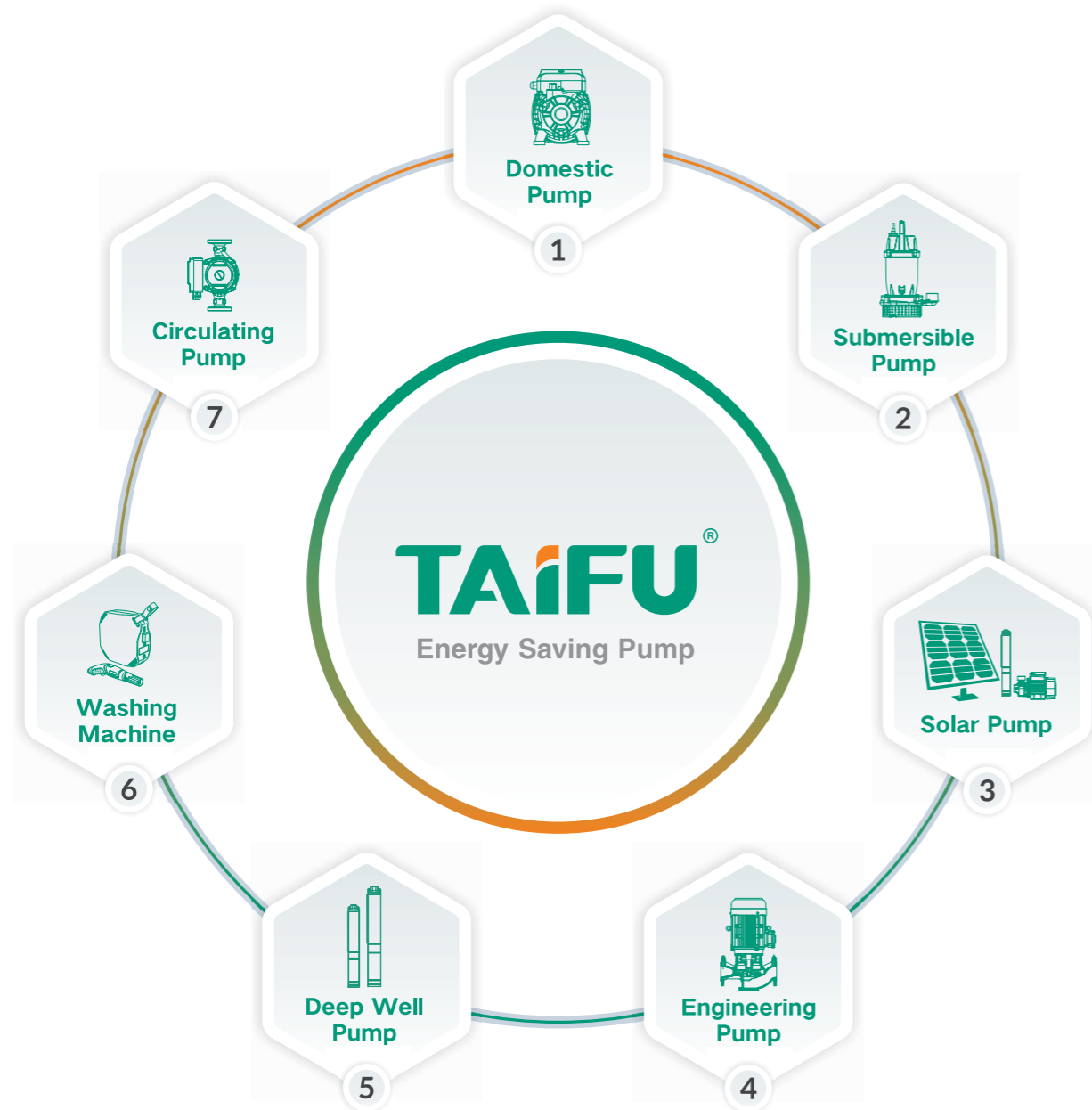
Whole Industrial Chain



- History: More than 40 years experience of manufacturing pumps since 1982
- Scale: Cover an area of up to 170000 square meters, have nearly 1000 employees
- Technology: A group of professional technical engineers and a strong R&D team
- Management: Scientific ERP management and strict quality control system
- Equipments: Japanese automatic molding machine & pouring machine for cast iron parts, double spindle lathe for pump body and stator, Japanese CNC precision automatic lathe for shaft, automatic wiring machine, electrophoresis, etc.
- Innovations: Continuously diversify products range to satisfy customers' demands
- Production capacity: 200,000 pcs/month
- Marketing network: America, Europe, Asia, Africa, etc;
- Long-term supplier of world-class companies: GAZI and main supermarkets in USA etc;
- NEW: Professional technology development and production group for controller PCB board

RoHS **CE** **SA** **ISO9001** **ISO14001** **OHSAS18001**

FRAMEWORK OF SEVEN BUSINESS UNITS



40⁺
40 years of pump industry

4⁺
Overseas branches: Russia, Vietnam, North America, Indonesia

150⁺
More than 150 export countries

700⁺
More than 700 types and models of water pumps

LEADING TECHNOLOGY AND PRODUCTION PROCESS

Build core power of competitiveness
Enhance added value of innovation

80⁺
R & D Personnel

The company following a quality first path by strictly implementing the theory of "Market oriented, innovation, quality and customer satisfaction" to get a lot of certificates, such as ISO9001 (Quality Management System), ISO14001 (Environmental Management System), ISO45001:2018(Occupational Health and Safety Management System) as well as CE, CSA certificates and so on in order to adapt the demand of national markets.

86⁺
National Patent

It has an international and systematic R & D team led by doctors and senior engineers, implements a talent training mechanism of "introducing and going out", combines production, learning and research with universities and colleges in Zhejiang University, and carries out research on new energy, new materials and new technologies.



FULL CATEGORY PRODUCT LAYOUT DRIVES INDUSTRIAL UPGRADING

80%

80% automatic production of core components

TAIFU has achieved 80% automatic production of core components and 90% of spare parts through continuously automatic updated production equipments.

90%

90% of spare parts production

High-end equipments can ensure effective control of products' quality, make the production more advanced, significantly improve the production efficiency, greatly improve working environment, and continuously improve products' quality and market competitiveness.

In order to pursue the quality concept of processing, standardizing, refinement and branding, Taifu will make solid progress towards the goal of becoming a smart factory!



THE WHOLE INDUSTRY CHAIN ENSURE THE HIGH QUALITY



CONTENTS

Professional Water Pump Manufactory

HVAC CIRCULATOR PUMPS



STAR-A/C
Intelligent Circulating Pump 01



NEW STAR
Intelligent Circulating Pump 05



GRA
Intelligent Circulating Pump 09



GRA-C
Intelligent Circulating Pump 13



GRB
Intelligent Circulating Pump 16



GRC
Intelligent Circulating Pump 19



GRD
Intelligent Circulating Pump 21



STAR32/40/50/65
Intelligent Circulating Pump 23



GRS15/25/32
Pipeline Circulating Pump 27



GRS15/25/32TC
Pipeline Circulating Pump 29



GRS-Z
Pipeline Circulating Pump 31



GRS-F-M
Pipeline Circulating Pump 33



UPSP-A
Boiler Pump 36



UPSP-B
Boiler Pump 37

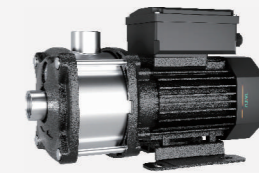


UPM
Boiler Pump 38

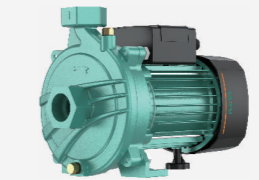


UPS
Boiler Pump 39

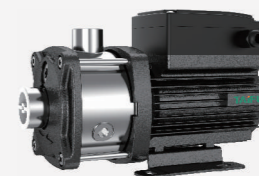
TEMPERATURE CONTROLLED PUMPS



TMH
Stainless Steel Horizontal
Multistage Centrifugal Pump 41



TUP
TUP Hot Water Centrifugal Pump 45



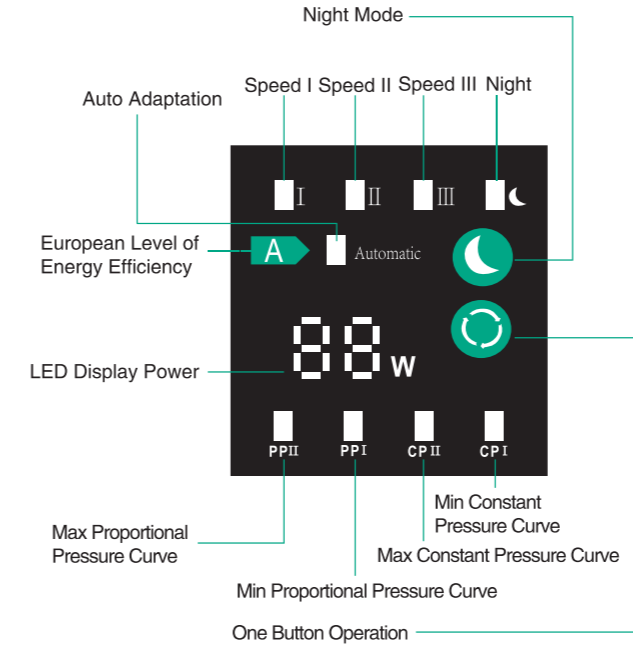
TEH
Stainless Steel Horizontal
Multistage Centrifugal Pump 47

Intelligent Circulator Pump Series

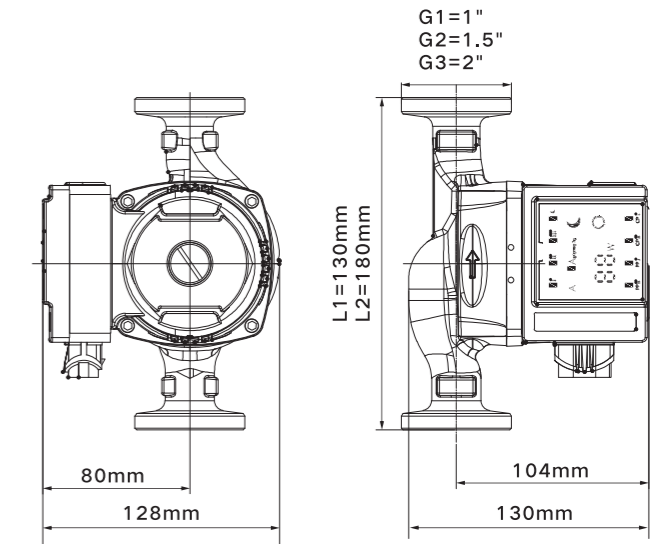
STAR-A/C



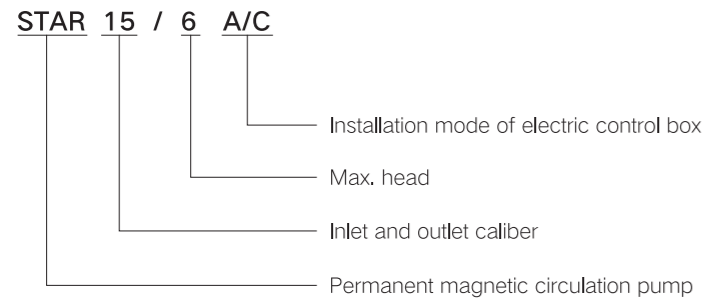
Led Display



Pump Dimensions



Model Description



Working Conditions

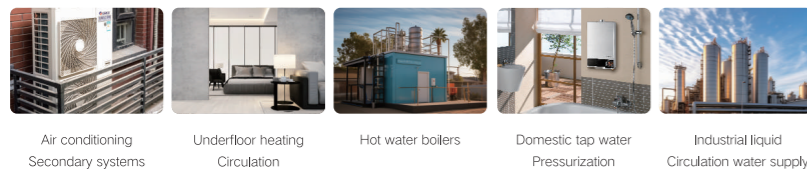
- Supply voltage: 230V-50/60Hz
- Max. head: 4-8m
- Max. flow rate: 40-78 l/min
- Liquid temperature: +2°C to 110°C
- Power range: 22-68W
- EEI ≤ 0.23
- Ambient temperature: 0°C to 40°C
- Protection class: IP44
- Insulation class: H

Advantages & Features

- Min power: 5W
- Frequency-conversion stator
- Multifunctional electronic component permanent magnetism rotor
- Convenient connector
- ERP certificate
- LED display

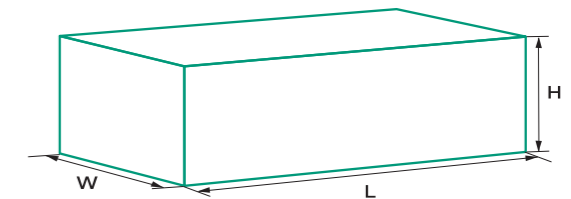
Applications

- Air conditioning secondary systems, underfloor heating circulation, hot water boilers, domestic tap water pressurization, industrial liquid circulation water supply.

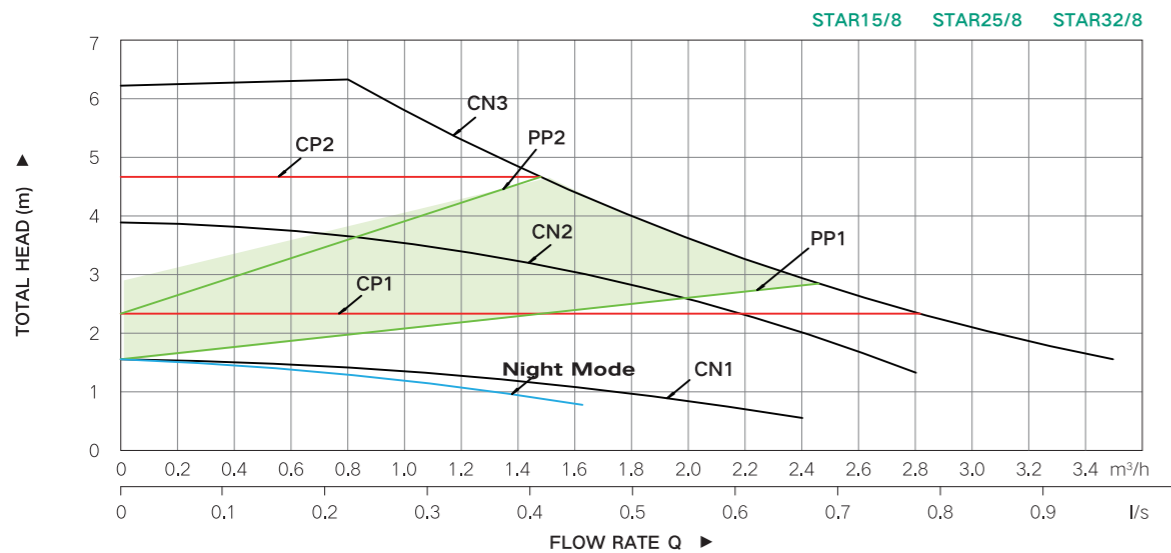
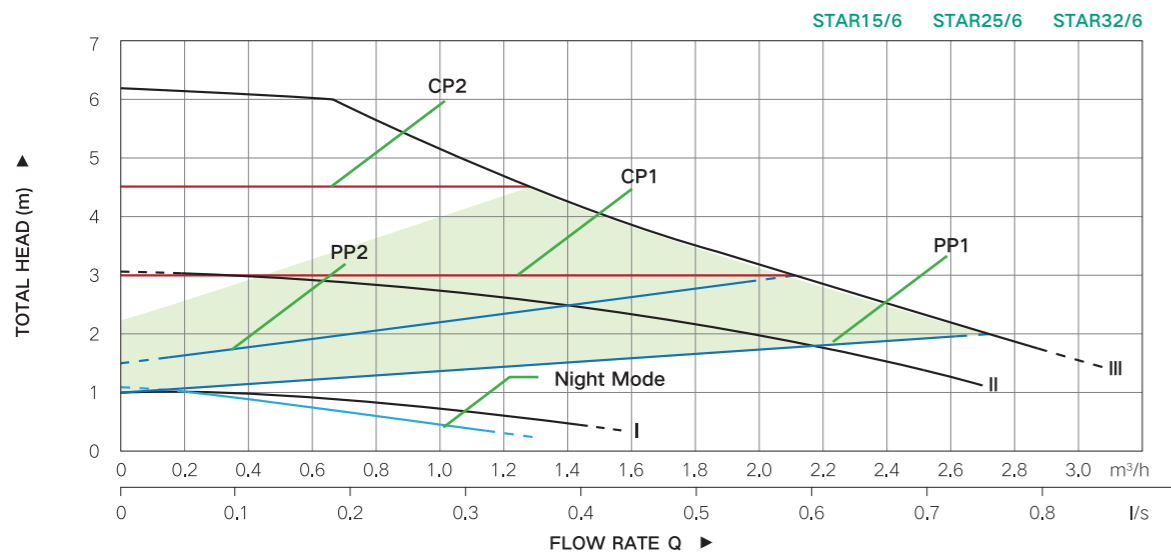
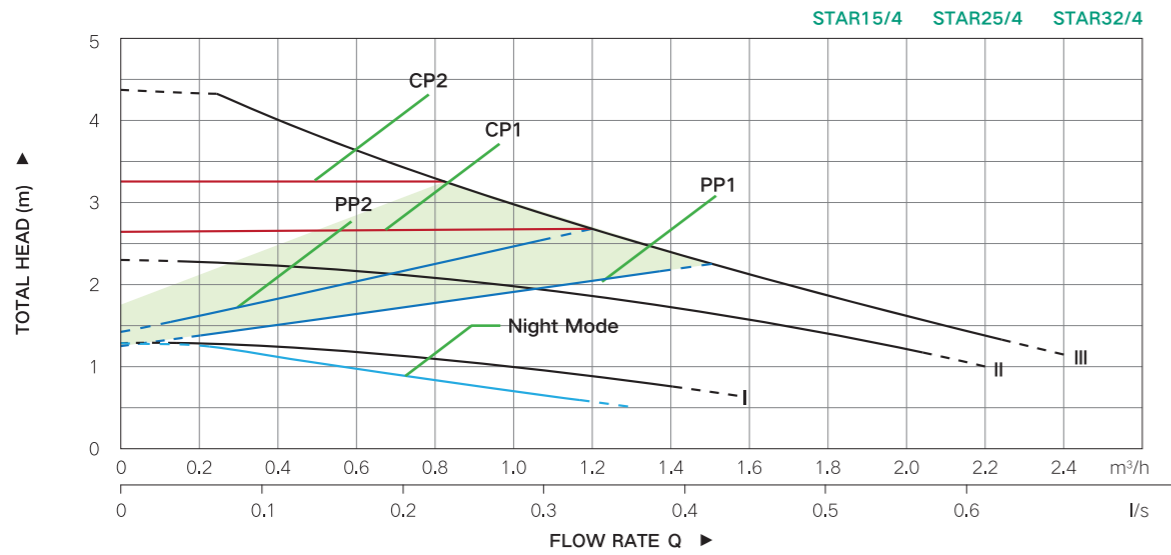


Pump Dimensions

Model	L	W	H	PCS/CTN
	mm	mm	mm	
STAR15/4A	218	100	150	6
STAR25/4A	218	100	150	6
STAR32/4A	218	100	150	6
STAR15/6A	218	100	150	6
STAR25/6A	218	100	150	6
STAR32/6A	218	100	150	6
STAR15/8A	218	100	150	6
STAR25/8A	218	100	150	6
STAR32/8A	218	100	150	6



Performance Curve

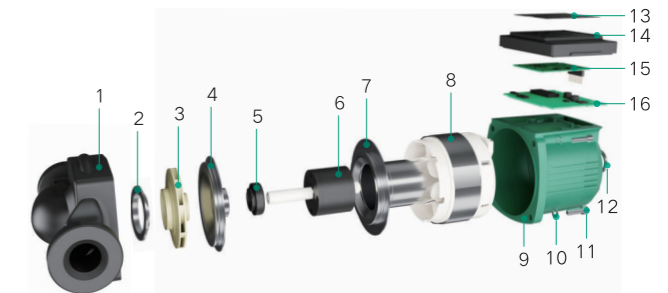


Performance Parameters

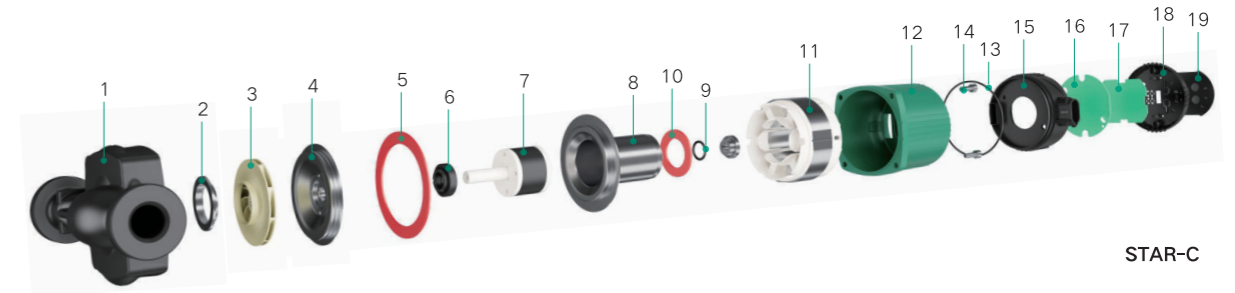
Model			Power	Max. flow rate	Max. head	Inlet/Outlet
			W	l/min	m	In
STAR25-4	STAR15/4A	STAR15/4C	22	40	4	1"x1"
	STAR25/4A	STAR25/4C	22	40	4	1.5"x1.5"
	STAR32/4A	STAR32/4C	22	40	4	2"x2"
STAR25-6	STAR15/6A	STAR15/6C	45	55	6	1"x1"
	STAR25/6A	STAR25/6C	45	55	6	1.5"x1.5"
	STAR32/6A	STAR32/6C	45	55	6	2"x2"
STAR25-8	STAR15/8A	STAR15/8C	68	78	8	1"x1"
	STAR25/8A	STAR25/8C	68	78	8	1.5"x1.5"
	STAR32/8A	STAR32/8C	68	78	8	2"x2"

Performance Structure

NO.	Part	NO.	Part
1	Pump body	9	Motor body
2	Seal washer	10	Gasket
3	Impeller	11	Electric control box base
4	Shield cover	12	O-ring
5	Thrust bearing	13	Nameplate
6	Rotor	14	Control box cover
7	Shielding	15	Display board
8	Stator	16	PCB motherboard



STAR-A

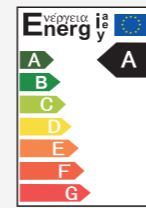


STAR-C

NO.	Part	NO.	Part	NO.	Part	NO.	Part
1	Pump body	6	Graphite static ring	11	Stator	16	PCB control motherboard
2	Seal washer	7	Rotor	12	Motor body	17	Display board
3	Impeller	8	Shielding	13	O-ring	18	Top cover of electronic control box
4	Shield cover	9	Gasket	14	Inside the hexagonal screw	19	Nameplate
5	Pump body gasket	10	Barrel gasket	15	Electric control box base		

Intelligent Circulator Pump Series

NEW STAR



EEI ≤ 0.23



Select



Select

Model Description

NEW STAR 25 / 6

Max. head

Inlet and outlet caliber

Permanent magnetic circulation pump

Working Conditions

- Supply voltage: 230V-50/60Hz
- Max. head: 4-8m
- Max. flow rate: 43.3-66.7 l/min
- Liquid temperature: +2°C to 110°C
- Power range: 18-52W
- EEI ≤ 0.23
- Ambient temperature: 0°C to 40°C
- Protection class: IP44
- Insulation class: H

Advantages & Features

- Min power: 3W
- Frequency-conversion stator
- Multifunctional electronic component
- Permanent magnetism rotor
- LED display
- Convenient connector
- ERP certificate

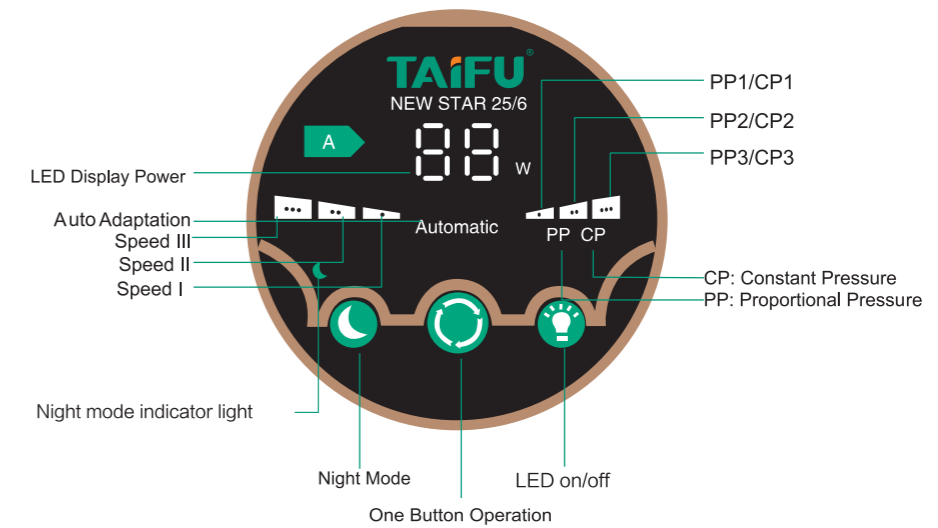
Applications

- Domestic water heaters, indoor pipe circulation, volumetric drains, air energy heat pumps, gas boiler hot water circulation.



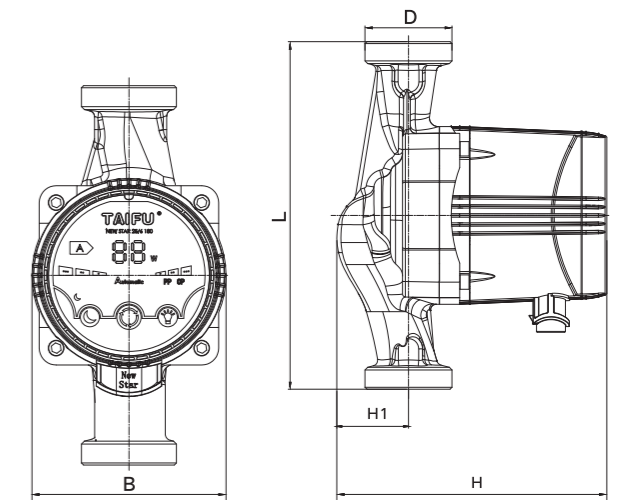
Domestic water heaters | Indoor pipe circulation | Volumetric drains | Air energy heat pumps | Gas boiler hot water Circulation

Led Display

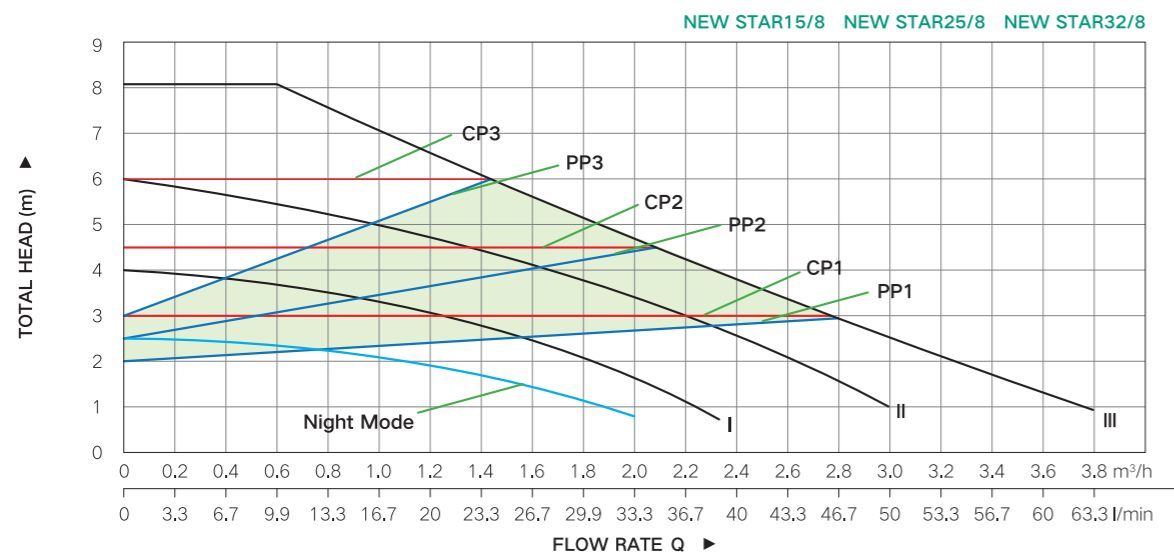
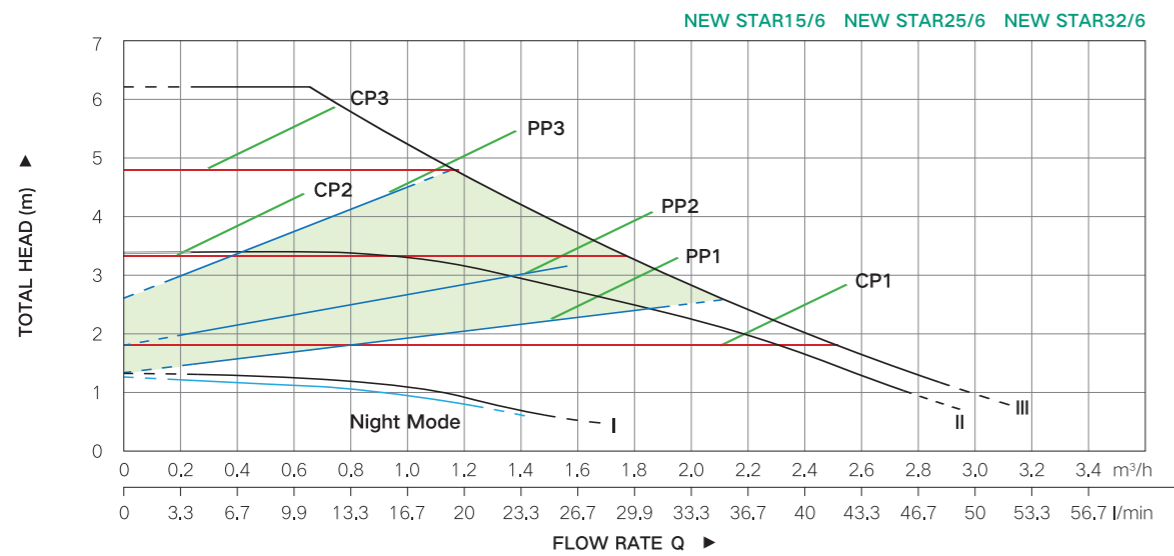
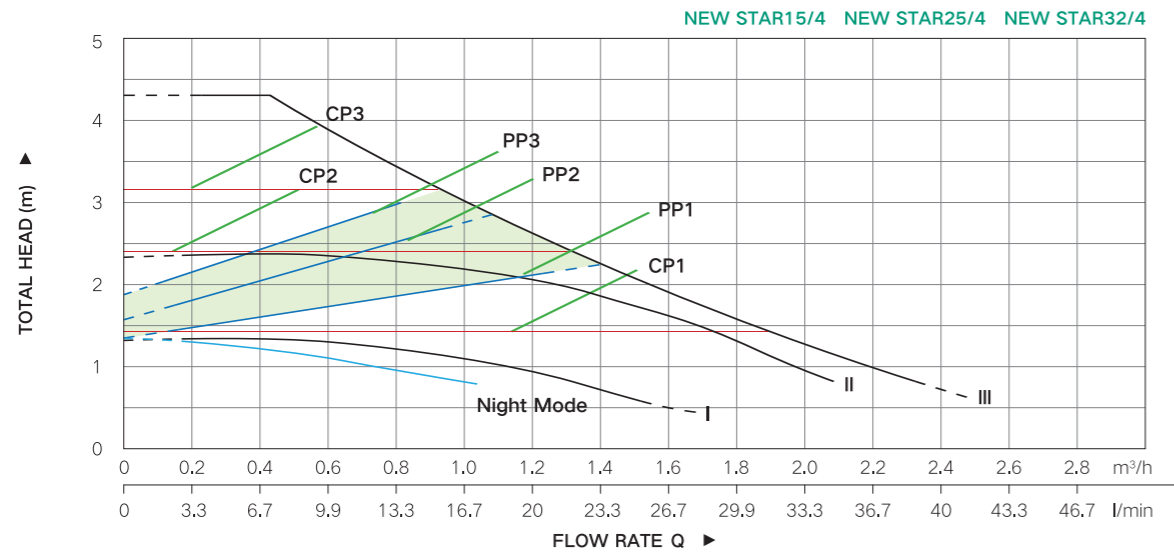


Pump Dimensions

Model	L	B	H	H1	D	Connectors
	mm	mm	mm	mm	In	
NEW STAR15/4-130	130	92	139.5	36.5	1"	1"to3/4"
NEW STAR25/4-130	130	92	139.5	36.5	1.5"	1.5"to1"
NEW STAR32/4-130	130	92	139.5	36.5	2"	2"to1.2"
NEW STAR25/4-180	180	92	139.5	36.5	1.5"	1.5"to1"
NEW STAR32/4-180	180	92	139.5	36.5	2"	2"to1.2"
NEW STAR15/6-130	130	92	139.5	36.5	1"	1"to3/4"
NEW STAR25/6-130	130	92	139.5	36.5	1.5"	1.5"to1"
NEW STAR32/6-130	130	92	139.5	36.5	2"	2"to1.2"
NEW STAR25/6-180	180	92	139.5	36.5	1.5"	1.5"to1"
NEW STAR32/6-180	180	92	139.5	36.5	2"	2"to1.2"
NEW STAR15/8-130	130	92	139.5	36.5	1"	1"to3/4"
NEW STAR25/8-130	130	92	139.5	36.5	1.5"	1.5" to 1"
NEW STAR32/8-130	130	92	139.5	36.5	2"	2"to1.2"
NEW STAR25/8-180	180	92	139.5	36.5	1.5"	1.5"to1"
NEW STAR32/8-180	180	92	139.5	36.5	2"	2"to1.2"



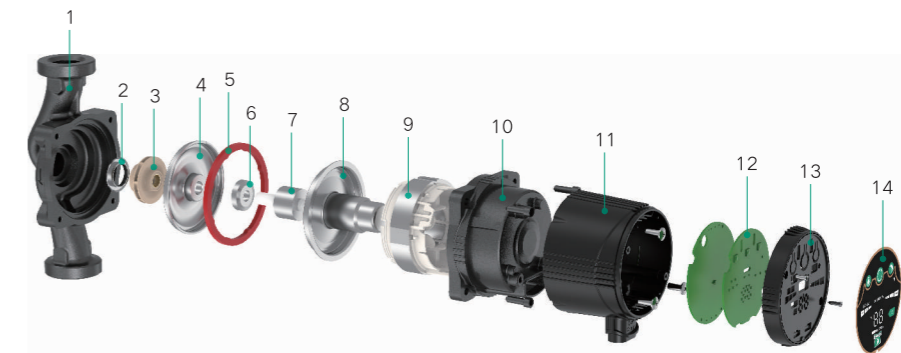
Performance Curve



Performance Parameters

Model	Pump body length	Voltage	Current	Power	Max. head	Max. flow rate
	mm	V	A	W	m	l/min
NEW STAR15/4-130	130	220	0.18	18	4	36.7
NEW STAR25/4-130		220	0.18	18	4	40
NEW STAR32/4-130		220	0.18	18	4	43.3
NEW STAR25/4-180	180	220	0.18	18	4	40
NEW STAR32/4-180		220	0.18	18	4	43.3
NEW STAR15/6-130	130	220	0.3	35	6	50
NEW STAR25/6-130		220	0.3	35	6	55
NEW STAR32/6-130		220	0.3	35	6	58.3
NEW STAR25/6-180	180	220	0.3	35	6	58.3
NEW STAR32/6-180		220	0.3	35	6	63.3
NEW STAR15/8-130	130	220	0.5	52	8	58.3
NEW STAR25/8-130		220	0.5	52	8	63.3
NEW STAR32/8-130		220	0.5	52	8	66.7
NEW STAR25/8-180	180	220	0.5	52	8	63.3
NEW STAR32/8-180		220	0.5	52	8	66.7

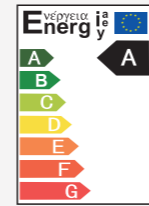
Product Structure



NO.	Part	NO.	Part	NO.	Part
1	Pump body	6	Graphite static ring	11	Electric control box
2	Seal washer	7	Rotor	12	Circuit board
3	Impeller	8	Shield sheath	13	Electric controlbox cover
4	Shield cover	9	Coil	14	Control panel
5	Pump body gasket	10	Motor body		

Intelligent Circulator Pump Series

GRA



EEI ≤ 0.23

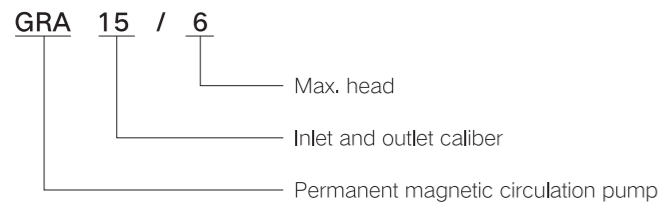


Select



Select

Model Description



Advantages & Features

- Easy operation and installation: equipped with Self Adapting mode AUTO (default setting), pump runs once the power is connected and adapts its performance according to actual system needs.
- Accurately meet different needs: Motor speed is effected by digital pulse-width modulation (PWM), enabling the pump to be used to meet different flow requirement in various systems.
- Low noise and high comfort: noise index ≤ 42dB (A)
- Low energy consumption: A class energy efficiency, lowest power consumption up to 5W.
- Multi-protection: with over-voltage and over-current protection to prevent the risk of motor burning.
- Eco-design benchmark: EEI ≤ 0.23
- Quick release power plug: start-up and stop the pump quickly.

Applications

- Domestic heating and hot water supply systems, Air and ground source heat pump systems, Air conditioning systems, industrial circulation systems.



Domestic heating and hot water supply systems



Air and ground source heat pump systems



Air conditioning systems



Industrial circulation Systems

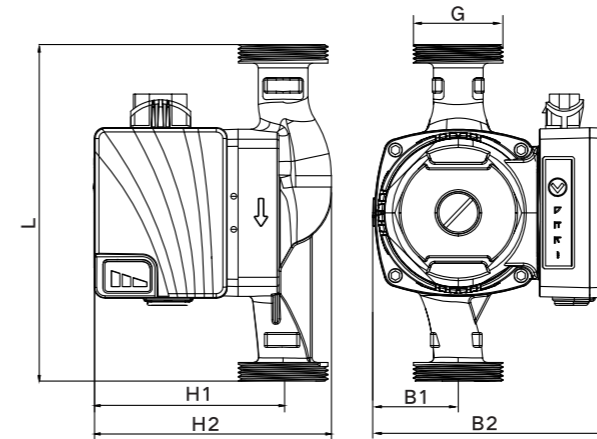


Solar systems

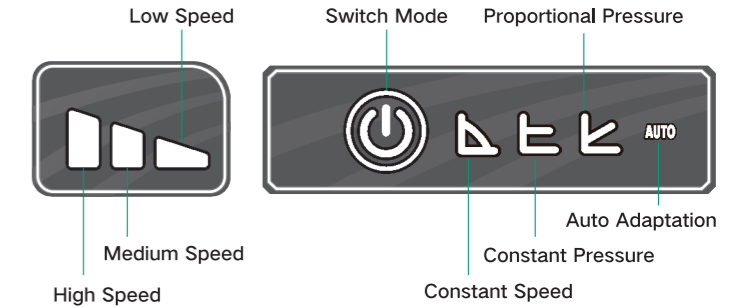
Working Conditions

- Liquid temperature: 2°C to 110°C
- Ambient temperature: 0°C to 40°C
- Maximum system pressure: 1MPa
- Protection class: IP44
- Supply voltage/frequency: 220V-50/60Hz
- Insulation class: H
- EEI ≤ 0.23
- Adaptive medium: clear water

Pump Dimensions

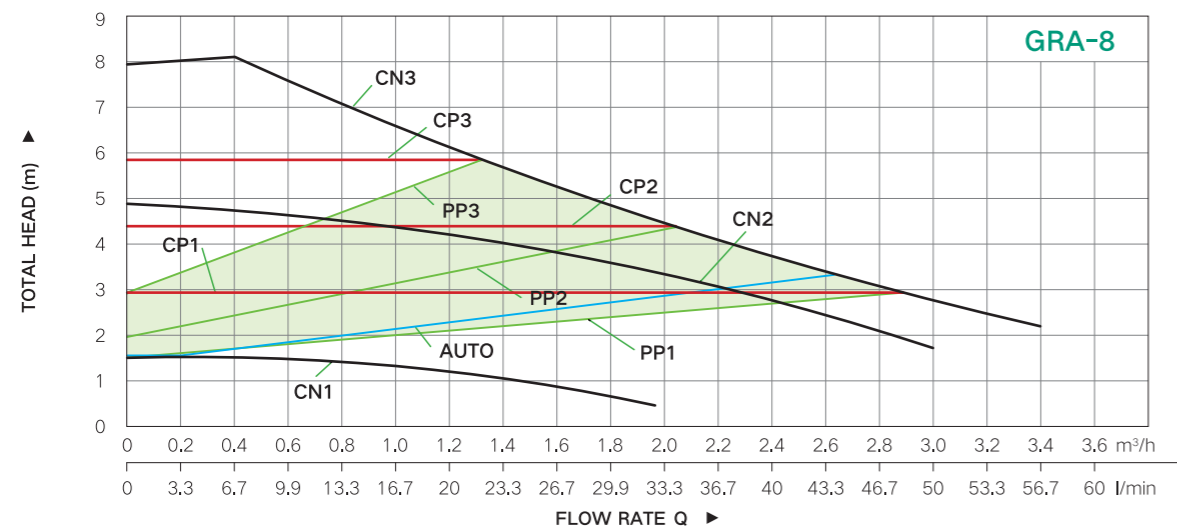
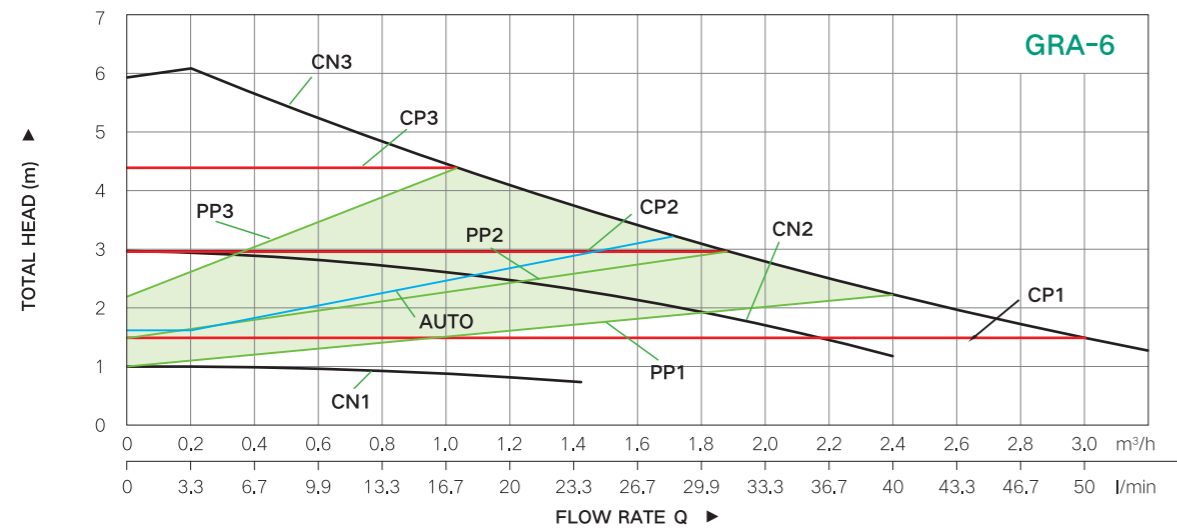
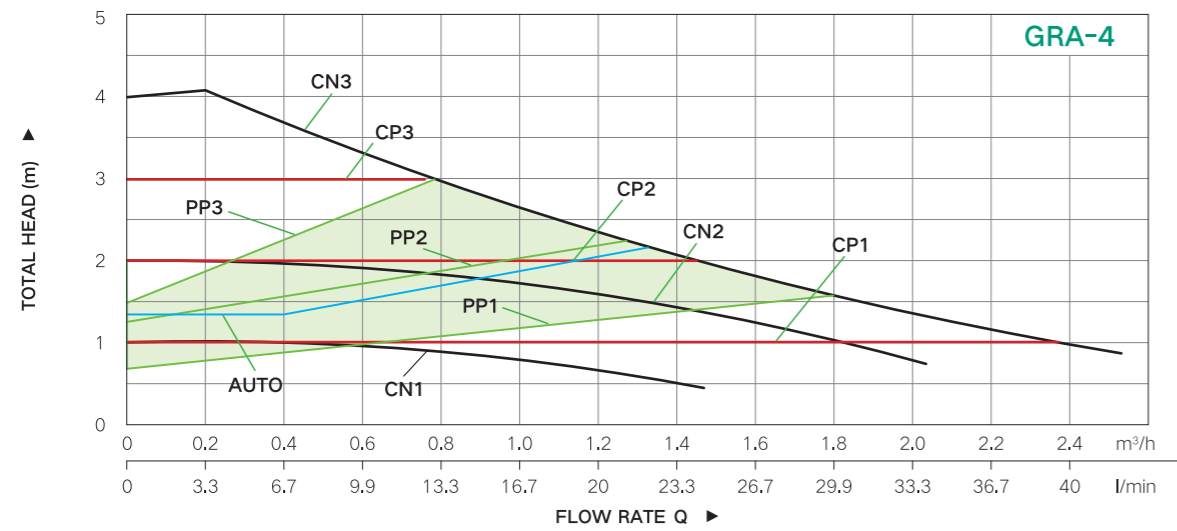


Led Display

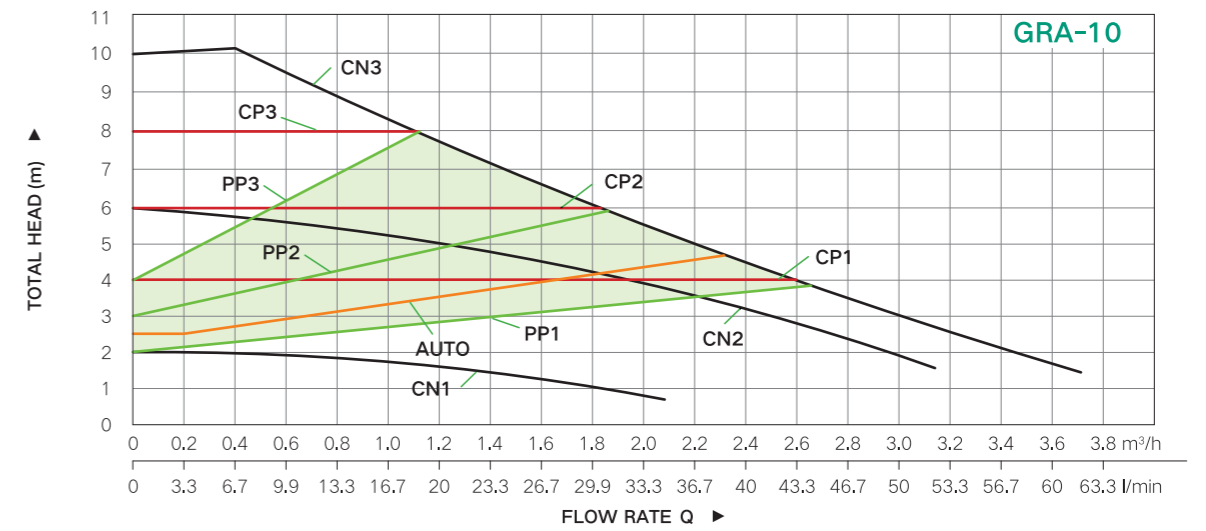


Model	Max Power	Max head	Max flow	L	G	H1	H2	B1	B2	Connectors
	W	m	m³/h	mm	In	mm	mm	mm	mm	In
GRA15/4-130	25	4	2.2	130	G1"	102	127	46	128	1" to 3/4"
GRA25/4-130	25	4	2.4	130	G1 1/2"	102	127	46	128	1 1/2" to 1"
GRA32/4-130	25	4	2.6	130	G2"	102	127	46	128	2" to 1 1/4"
GRA15/4-180	25	4	2.2	180	G1"	102	127	46	128	1" to 3/4"
GRA25/4-180	25	4	2.4	180	G1 1/2"	102	127	46	128	1 1/2" to 1"
GRA32/4-180	25	4	2.6	180	G2"	102	127	46	128	2" to 1 1/4"
GRA15/6-130	45	6	2.8	130	G1"	102	127	46	128	1" to 3/4"
GRA25/6-130	45	6	3	130	G1 1/2"	102	127	46	128	1 1/2" to 1"
GRA32/6-130	45	6	3.2	130	G2"	102	127	46	128	2" to 1 1/4"
GRA15/6-180	45	6	2.8	180	G1"	102	127	46	128	1" to 3/4"
GRA25/6-180	45	6	3	180	G1 1/2"	102	127	46	128	1 1/2" to 1"
GRA32/6-180	45	6	3.2	180	G2"	102	127	46	128	2" to 1 1/4"
GRA15/8-130	68	8	3.2	130	G1"	102	127	46	128	1" to 3/4"
GRA25/8-130	68	8	3.4	130	G1 1/2"	102	127	46	128	1 1/2" to 1"
GRA32/8-130	68	8	3.6	130	G2"	102	127	46	128	2" to 1 1/4"
GRA15/8-180	68	8	3.2	180	G1"	102	127	46	128	1" to 3/4"
GRA25/8-180	68	8	3.4	180	G1 1/2"	102	127	46	128	1 1/2" to 1"
GRA32/8-180	68	8	3.6	180	G2"	102	127	46	128	2" to 1 1/4"
GRA15/10-130	80	10	3.6	130	G1"	102	127	46	128	1" to 3/4"
GRA25/10-130	80	10	3.8	130	G1 1/2"	102	127	46	128	1 1/2" to 1"
GRA32/10-130	80	10	4.0	130	G2"	102	127	46	128	2" to 1 1/4"
GRA15/10-180	80	10	3.6	180	G1"	102	127	46	128	1" to 3/4"
GRA25/10-180	80	10	3.8	180	G1 1/2"	102	127	46	128	1 1/2" to 1"
GRA32/10-180	80	10	4.0	180	G2"	102	127	46	128	2" to 1 1/4"

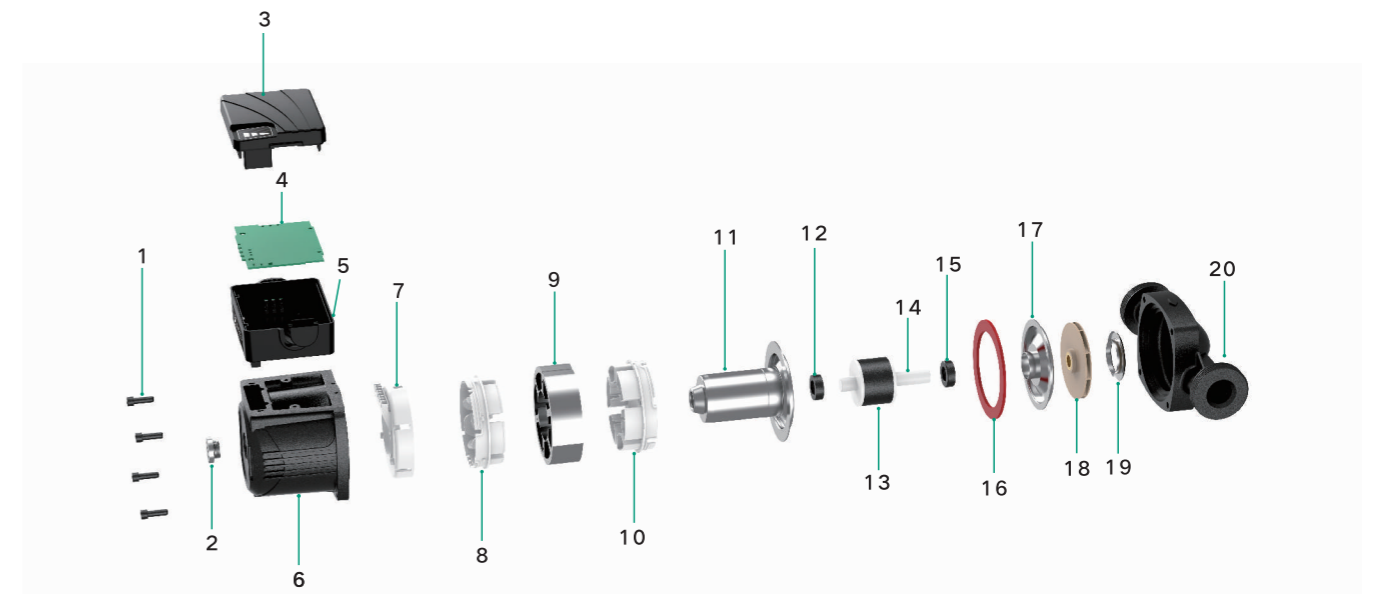
Performance Curves



Performance Curves



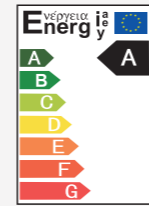
Products Structure



No.	Part	No.	Part	No.	Part
1	Screws	8	Wire protection cap	15	Position seal
2	Air bolt	9	Stator	16	O ring
3	Control box cover	10	Wire protection cap	17	Shield cover
4	Pcb board	11	Rotor shield	18	Impeller
5	Control box	12	Position seal	19	Fix ring
6	Motor housing	13	Rotor	20	Pump body
7	Wire protection cap	14	Shaft		

Intelligent Circulator Pump Series

GRA-C



EEI ≤ 0.23

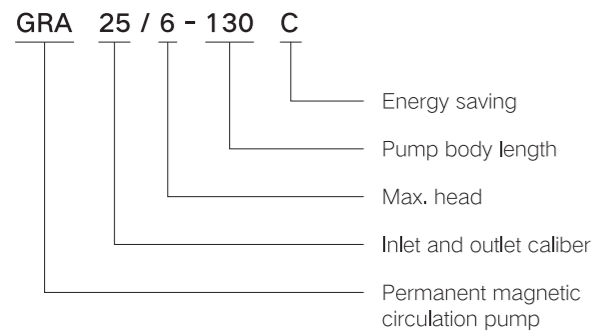


Select



Select

Model Description



Working Conditions

- Liquid temperature: 2°C to 110°C
- Ambient temperature: 0°C to 40°C
- Maximum system pressure: 1MPa
- Protection class: IP44
- Supply voltage/frequency: 220V-50/60Hz
- Insulation class: H
- EEI ≤ 0.23
- Adaptive medium: clear water

Advantages & Features

- The pump and system are integrated design, easy to install and suitable for use in small spaces.
- No rolling bearings, no need to add lubricating oil, no need to bother about vibration overload, very convenient maintenance.
- No motor fan, internal liquid circulation cooling, pump noise is smaller and quieter.
- No mechanical seal, more effective in eliminate liquid leakage, suitable for variety liquids.
- Permanent magnet motor is more energy saving, saving more than half of the electricity per unit of time compared to the traditional electric pumps, but same efficiency.
- Intelligent pump, with a variety of operating modes, can be adapted to different applications, with multiple internal protection measures, more effective protection of the pump.

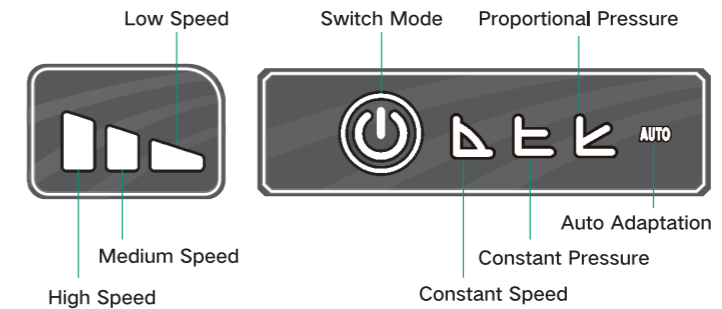
Applications

- Domestic water heaters, indoor pipeline circulation, air energy Heat pumps, gas boiler hot water circulation.

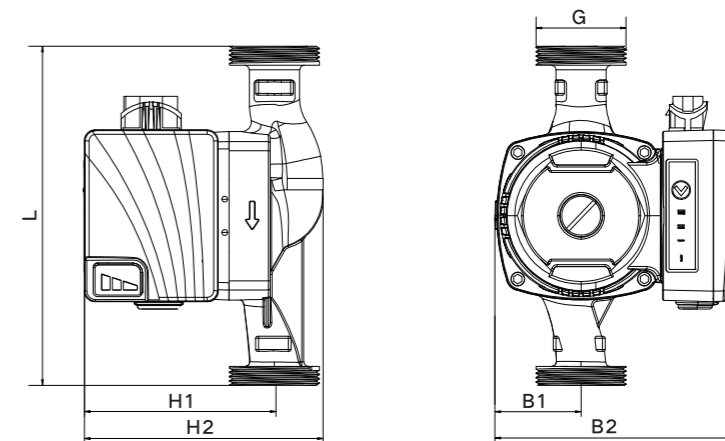


Domestic water heaters | Indoor pipe circulation | Air energy heat pumps | Gas boiler hot water Circulation

Led Display

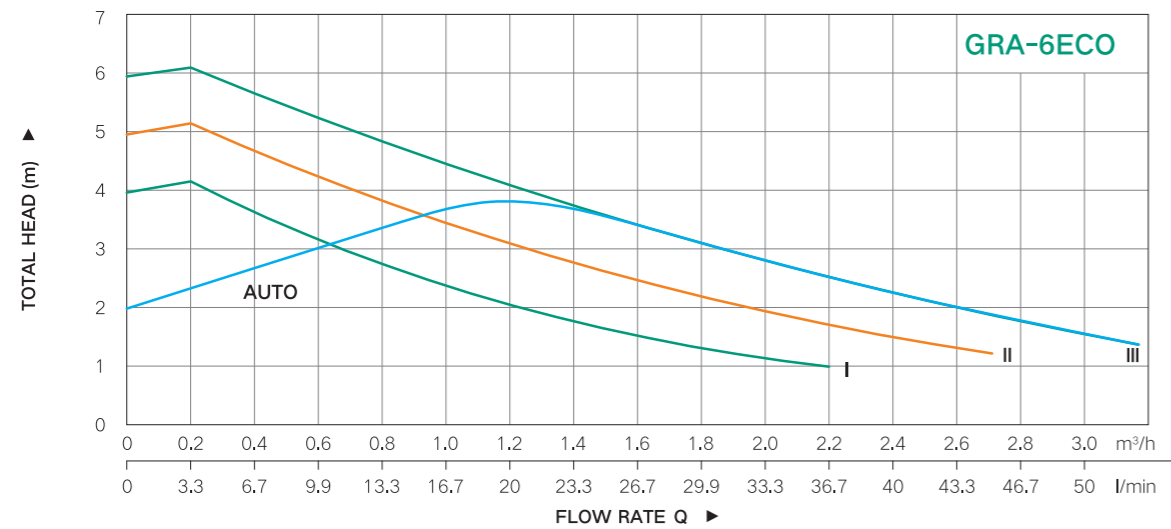


Pump Dimensions

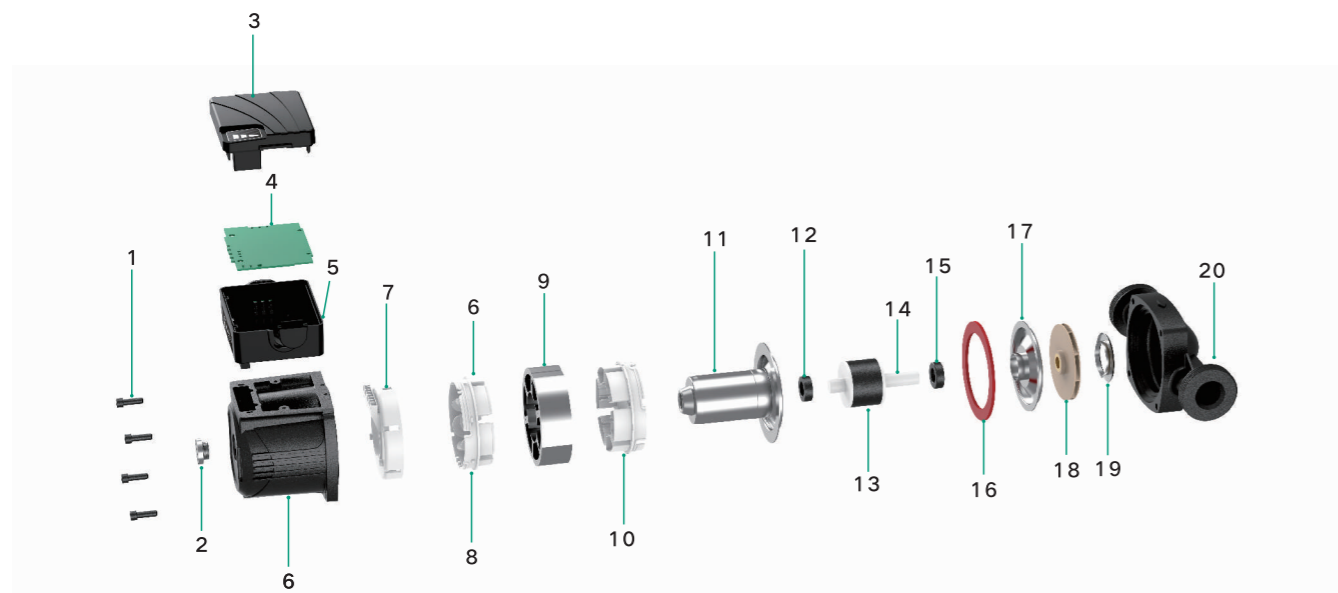


Model	Max Power	Max head	Max flow rate	L	G	H1	H2	B1	B2	Connectors
	W	m	l/min	mm	In	mm	mm	mm	mm	In
GRA15/6-130C	45	6	46.7	130	G1"	102	127	46	128	1" to 3/4"
GRA25/6-130C	45	6	50	130	G1 1/2"	102	127	46	128	1 1/2" to 1"
GRA32/6-130C	45	6	53.3	130	G2"	102	127	46	128	2" to 1 1/4"
GRA15/6-180C	45	6	46.7	180	G1"	102	127	46	128	1" to 3/4"
GRA25/6-180C	45	6	50	180	G1 1/2"	102	127	46	128	1 1/2" to 1"
GRA32/6-180C	45	6	53.3	180	G2"	102	127	46	128	2" to 1 1/4"

Performance Curves

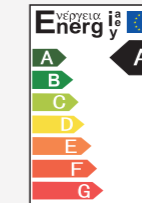


Products Structure



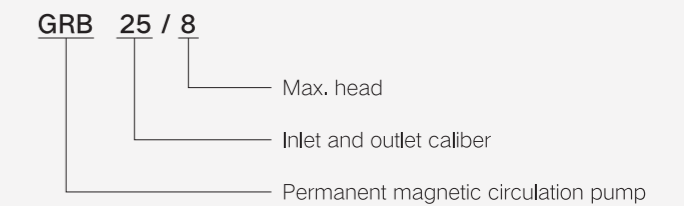
No.	Part	No.	Part	No.	Part
1	Screws	8	Wire protection cap	15	Position seal
2	Air bolt	9	Stator	16	O ring
3	Control box cover	10	Wire protection cap	17	Shield cover
4	Pcb board	11	Rotor shield	18	Impeller
5	Control box	12	Position seal	19	Fix ring
6	Motor housing	13	Rotor	20	Pump body
7	Wire protection cap	14	Shaft		

Intelligent Circulator Pump Series GRB



EEI ≤ 0.23

Model Description



Applications

- Domestic heating and water supply system, floor heating system, Air conditioning system, industrial circulating system, solar systems.



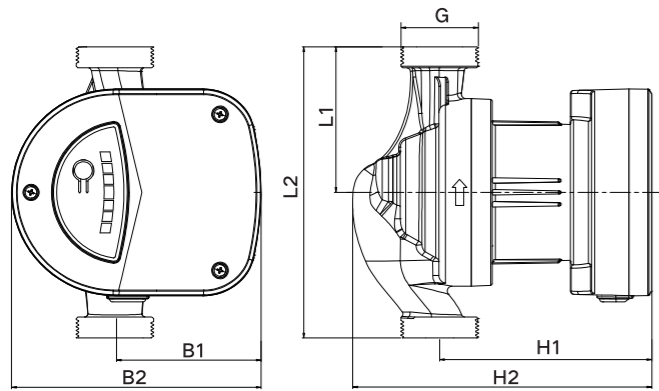
Technical Parameters

- Input power: single phase AC, rated voltage 220V, frequency 50/60Hz.
- Working environment temperature: 0°C ~ 40°C
- Liquid: clean water or diluted, clean, non-corrosive and non-explosive liquid.
- Liquid temperature: 2°C ~ 110°C (It is required that the liquid temperature should be higher than the ambient temperature).
- Max system pressure: no more than 1.0Mpa
- Protection grade: IP44
- EEI ≤ 0.23
- Insulation grade: H
- Impeller: PPO 30%GF
- Pump head: cast Iron HT 200

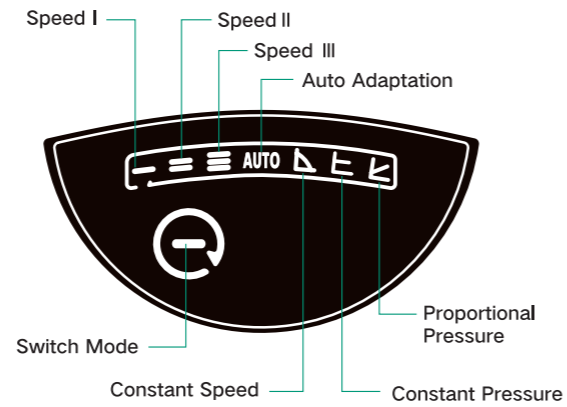
Advantages & Features

- Easy to install and start, various modes for selection.
- The PWM control function realizes the control of motor speed, which can meet different flow request from different system.
- Low noise-high comfort, the running noise as low as 42 decibels.
- Low energy consumption- the pump meets European energy efficiency A-level, the min energy consumption can reach 5W.
- Multiple protections-the pump equipped with multiple protections such as over voltage and over current protection to prevent the risky of motor burnt.
- EEI ≤ 0.23
- Releasable power plug connector can realize quick start and stop of the pump.

Pump Dimensions

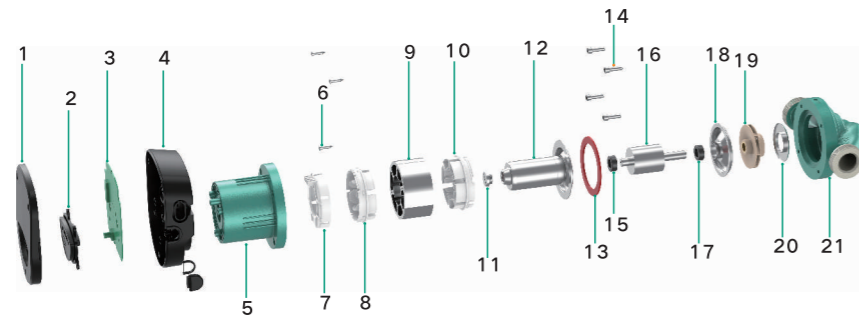


Led Display



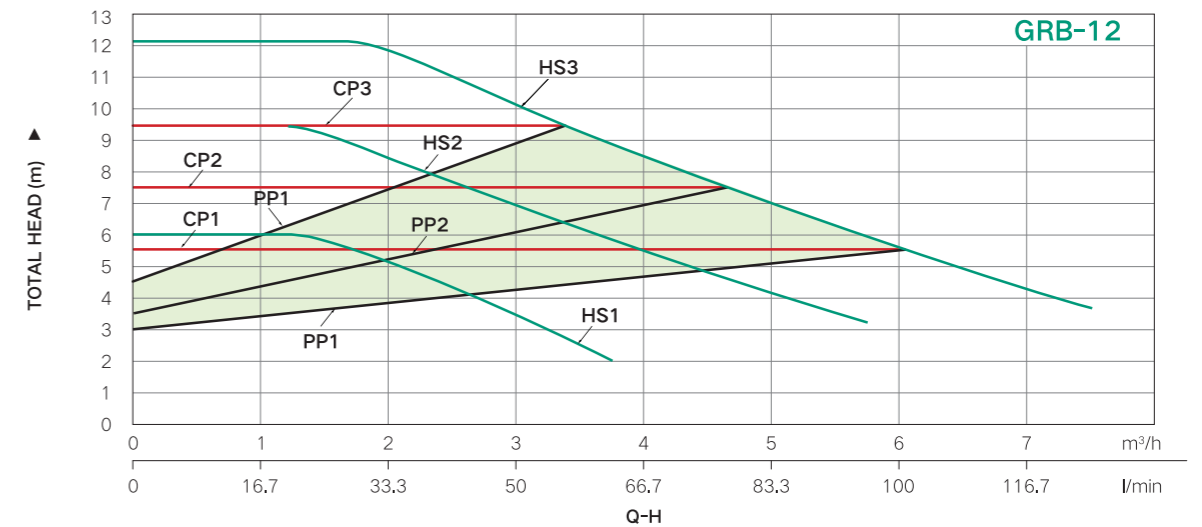
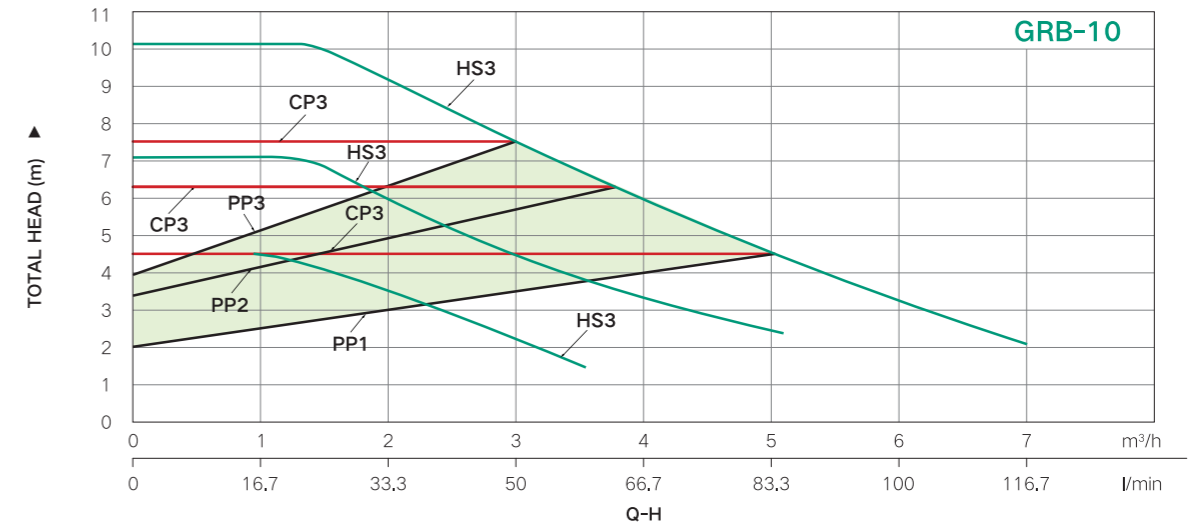
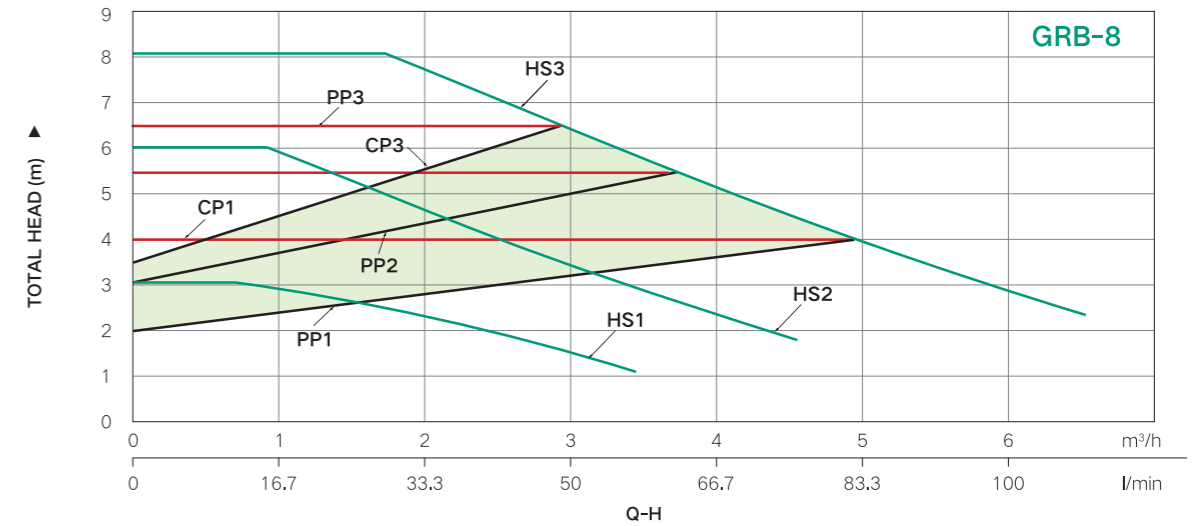
Model	Max Power	Max Flow	Max head	L1	L2	H1	H2	B1	B2	G	Connectors
	W	m³/h	m	mm	mm	mm	mm	mm	mm	In	In
GRB25/8	120	6.5	8	90	180	131,2	184,8	89,3	154,2	1 1/2"	1 1/2" to 1"
GRB32/8	120	7.5	8	90	180	131,2	184,8	89,3	154,2	2"	2" to 1 1/4"
GRB25/10	150	7	10	90	180	131,2	184,8	89,3	154,2	1 1/2"	1 1/2" to 1"
GRB32/10	150	8	10	90	180	131,2	184,8	89,3	154,2	2"	2" to 1 1/4"
GRB25/12	180	7.5	12	90	180	131,2	184,8	89,3	154,2	1 1/2"	1 1/2" to 1"
GRB32/12	180	8.5	12	90	180	131,2	184,8	89,3	154,2	2"	2" to 1 1/4"

Products Structure



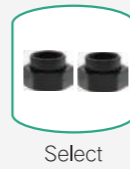
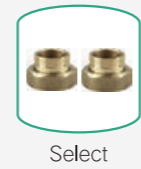
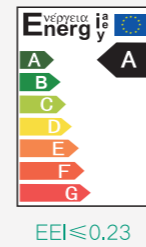
No.	Part	No.	Part	No.	Part	No.	Part
1	Terminal box cover	7	Wire protection cap	13	O ring	19	Impeller
2	Terminal box cover	8	Wire protection cap	14	Screws	20	Fix ring
3	PCB board	9	Stator	15	Position seal	21	Pump body
4	Terminal box	10	Wire protection cap	16	Shaft		
5	Motor housing	11	Air bolt	17	Position seal		
6	Terminal screws	12	Shield	18	Shield cover		

Performance Curves

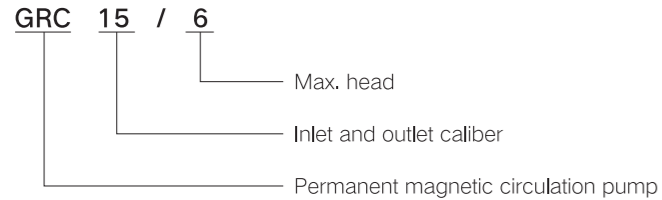


Intelligent Circulator Pump Series

GRC



Model Description



Advantages & Features

- The pump and system are integrated design, easy to install and suitable for use in small spaces.
- No rolling bearings, no need to add lubricating oil, no need to bother about vibration overload, very convenient maintenance.
- No motor fan, internal liquid circulation cooling, pump noise is smaller and quieter.
- No mechanical seal, more effective in eliminate liquid leakage, suitable for variety liquids.
- Permanent magnet motor is more energy saving, saving more than half of the electricity per unit of time compared to the traditional electric pumps, but same efficiency.
- Intelligent pump, with a variety of operating modes, can be adapted to different applications, with multiple internal protection measures, more effective protection of the pump.

Applications

- Domestic water heaters, indoor pipeline circulation, air energy heat pumps, gas boiler hot water circulation.



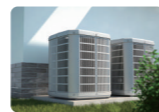
Domestic water heaters



Indoor pipe circulation



Volumetric drains

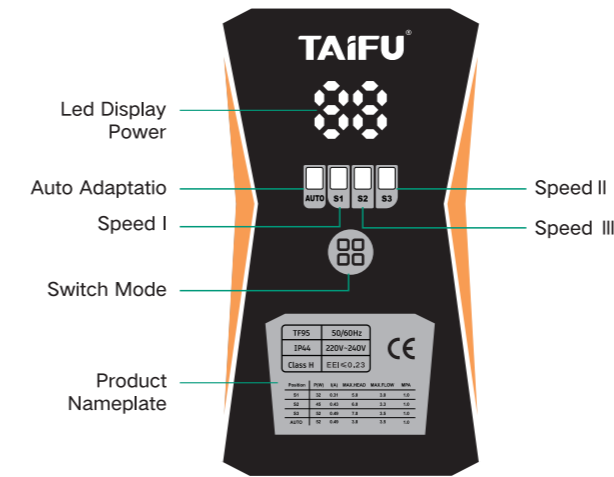


Air energy heat pumps

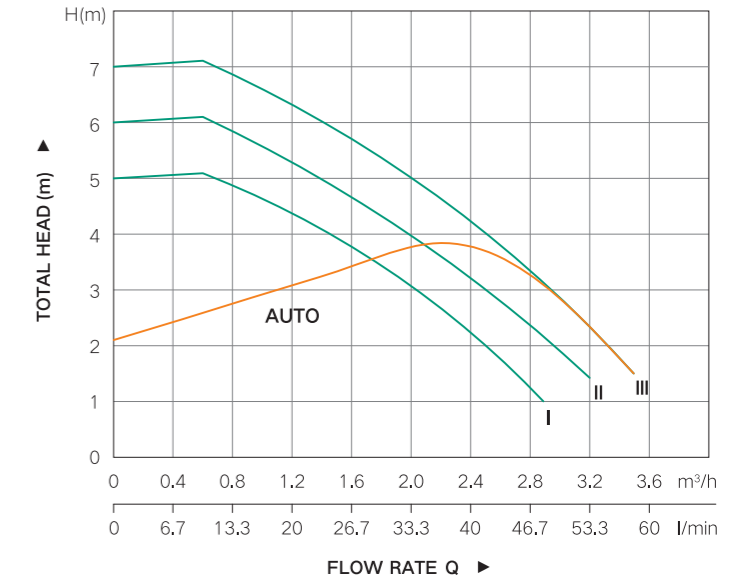
Working Conditions

- Liquid temperature: 2°C to 110°C
- Ambient temperature: 0°C to 40°C
- Maximum system pressure: 1MPa
- Protection class: IP44
- Supply voltage/frequency: 220V-50/60Hz
- Insulation class: H
- EEI <= 0.23
- Adaptive medium: clear water

Led Display



Performance Curve

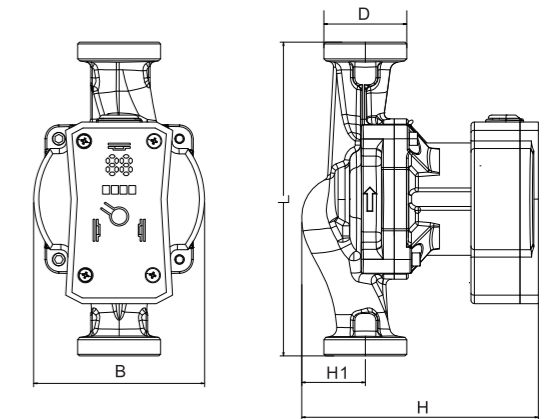


Performance Parameters

Model	Pump body length	Voltage	Power	Max. head	Max. flow rate
	mm	v	W	m	l/min
GRC15/7-130	130	220	52	7	53.3
GRC25/7-130	130		52	7	58.3
GRC32/7-130	130		52	7	60
GRC25/7-180	180		52	7	58.3
GRC32/7-180	180		52	7	60

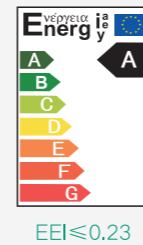
Pump Dimensions

Model	L	B	H	H1	D	Connectors
	mm	mm	mm	mm	mm	
GRC15/7-130	130	98	135.7	36.5	1"	1"to3/4"
GRC25/7-130	130	98	135.7	36.5	1.5"	1.5"to1"
GRC32/7-130	130	98	135.7	36.5	2"	2"to1.2"
GRC25/7-180	180	98	135.7	36.5	1.5"	1.5"to1"
GRC32/7-180	180	98	135.7	36.5	2"	2"to1.2"



Intelligent Circulator Pump Series

GRD



Model Description

GRD 15 / 15

Max. head

Inlet and outlet caliber

Permanent magnetic circulation pump

Working Conditions

- Liquid temperature: 2°C to 110°C
- Ambient temperature: 0°C to 40°C
- Maximum system pressure: 1MPa
- Protection class: IP44
- Supply voltage/frequency: 220V-50/60Hz
- Insulation class: H
- EEI ≤ 0.23
- Adaptive medium: clear water

Advantages & Features

- The pump and system are integrated design, easy to install and suitable for use in small spaces
- No rolling bearings, no need to add lubricating oil, no need to bother about vibration overload, very convenient maintenance.
- No motor fan, internal liquid circulation cooling, pump noise is smaller and quieter.
- No mechanical seal, more effective in eliminate liquid leakage, suitable for variety liquids.
- Permanent magnet motor is more energy saving, saving more than half of the electricity per unit of time compared to the traditional electric pumps, but same efficiency.
- Intelligent pump, with a variety of operating modes, can be adapted to different applications, with multiple internal protection measures, more effective protection of the pump.

Applications

- Domestic water heaters, indoor pipeline circulation, air energy heat pumps, gas boiler hot water circulation, volumetric drainage pump.



Domestic heating and water supply system



indoor pipeline circulation



air energy heat pumps

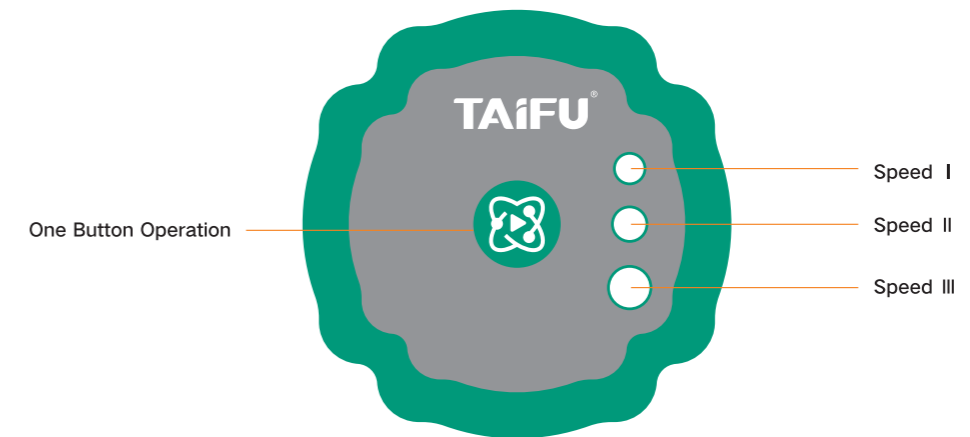


gas boiler hot water circulation

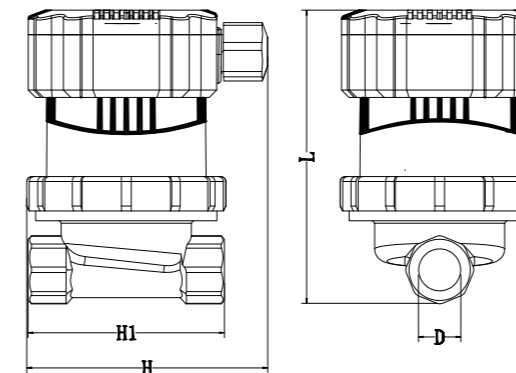


volumetric drainage pump

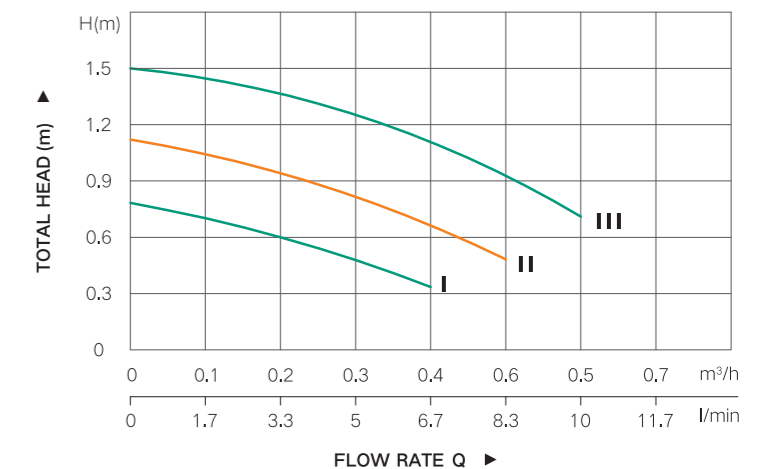
Led Display



Installation Dimensions



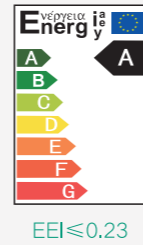
Performance Curve



Performance Parameters

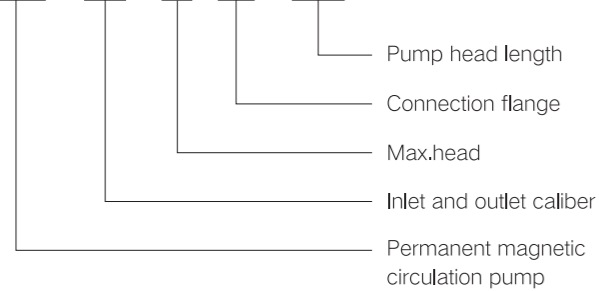
Model	Voltage	Current	Power	Max. head	Max. flow rate	L	H	H1	D
	V	A	W	m	m³/h	mm	mm	mm	In
GRD15/15	220	0,03	8	1,5	0,6	119,5	98,2	80	1/2"

Intelligent Circulator Pump Series STAR32/40/50/65



Model Description

STAR 40 - 12 F - 220



Working Conditions

- Supply voltage: 230V-50/60Hz
- Max. head range: 12-18m
- Max. flow range: 22-31m³/h
- Liquid temperature: +2°C to 110°C
- Power range: 630-1000W
- EEI ≤ 0.23
- Ambient temperature: 0°C to 40°C
- Enclosure protection class: IP44
- Insulation class: H

Advantages & Features

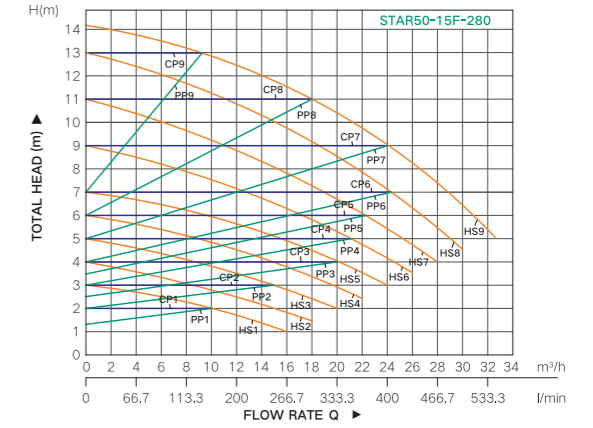
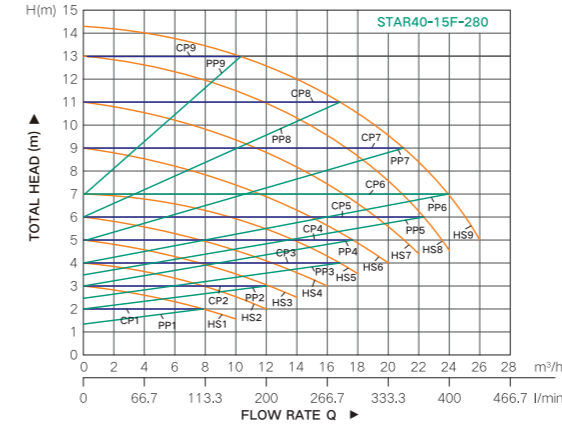
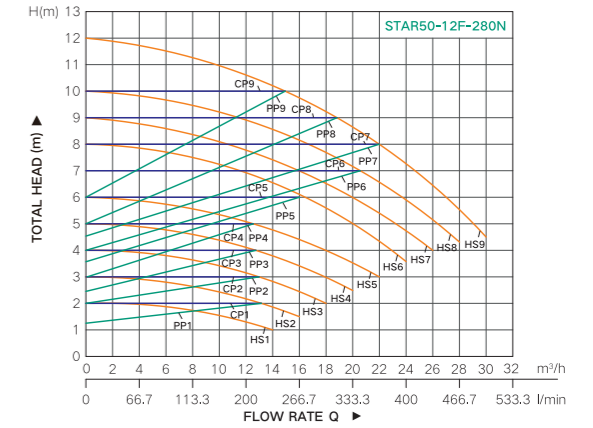
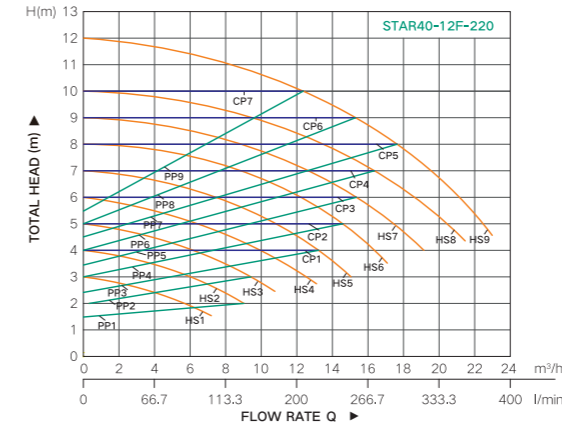
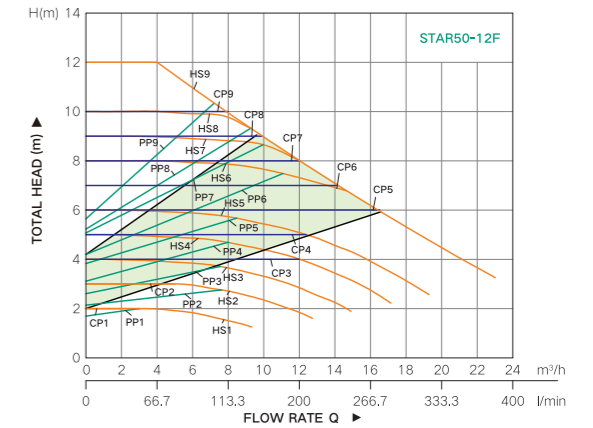
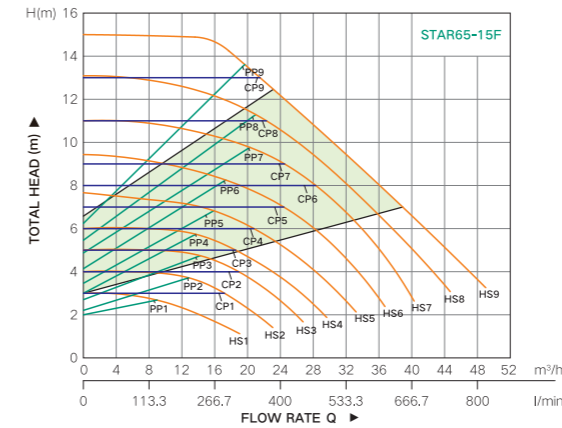
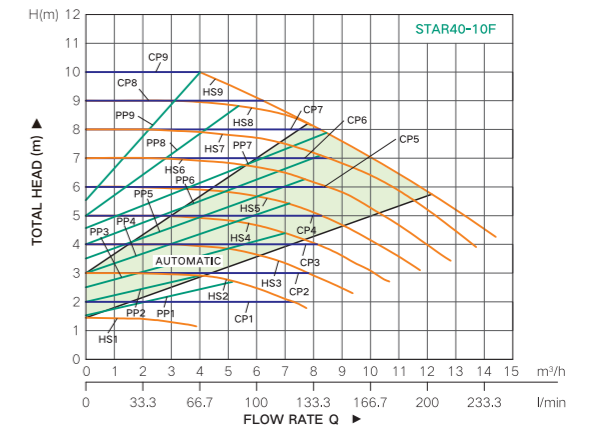
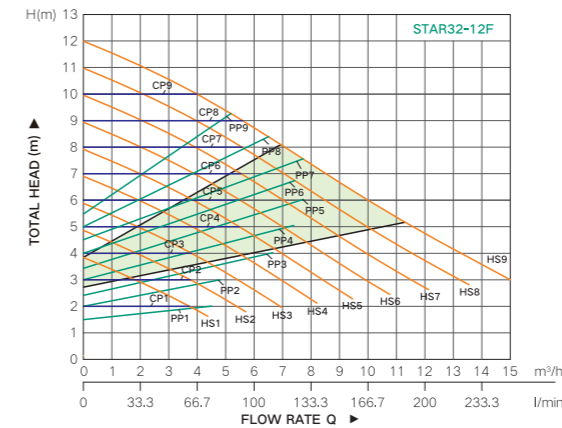
- No rolling bearings, no need to add lubricating oil, no need to bother about vibration overload, very convenient maintenance.
- No motor fan, internal liquid circulation cooling, less noise, more quiet.
- No mechanical seal, more effective in eliminating liquid leakage, suitable for various liquids.
- The permanent magnet motor is more energy efficient, saving more than half of the electricity per unit of time compared to traditional electric pumps, but same efficiency.
- Intelligent pump, with a variety of operating modes, can be adapted to different applications, with multiple internal protection measures, more effective protection of the pump.
- ERP Certification

Applications

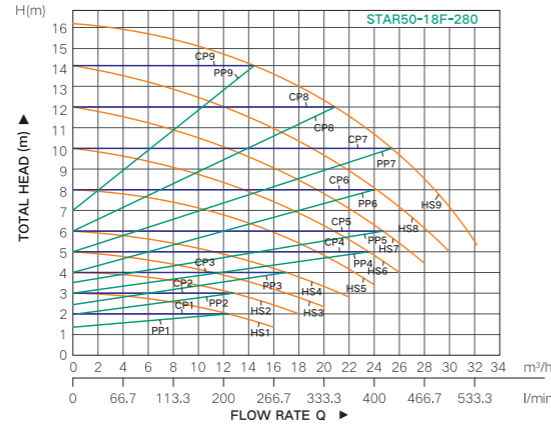
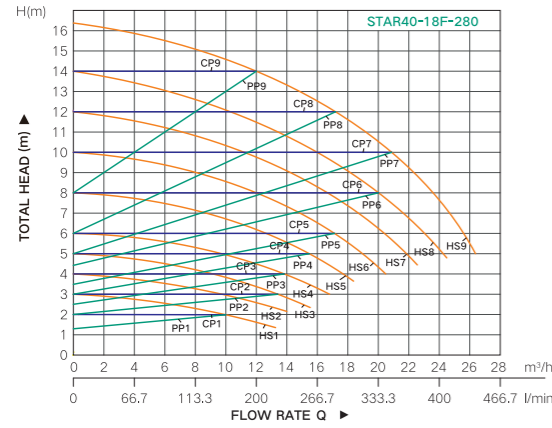
- Domestic water heaters, indoor pipeline circulation, air energy heat pumps, gas boiler hot water circulation.



Performance Curve



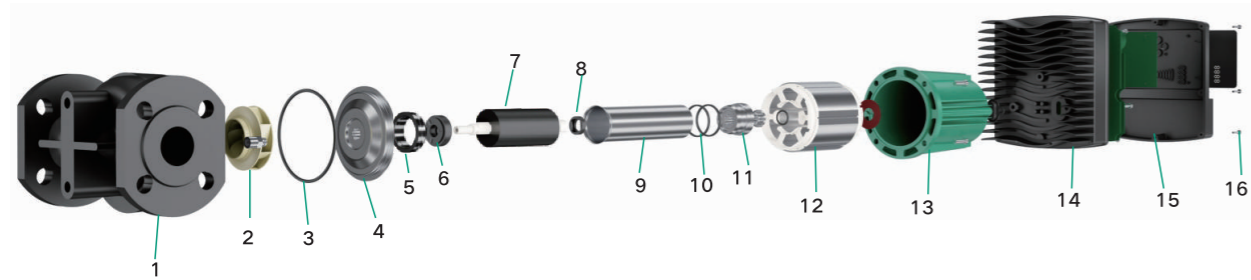
Performance Curve



Performance Parameters

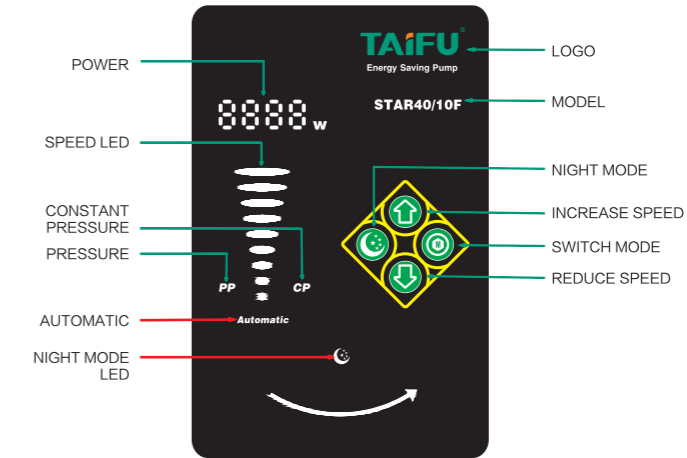
Model	Power	Max flow rate	Max.head	Inlet/Outlet
	W	l/min	m	In
STAR32-12F	340	250	12	DN32
STAR40-10F	340	233	10	DN40
STAR40-12F-220	630	366.7	12	DN40
STAR40-15F-220	790	400.0	15	DN40
STAR40-18F-220	900	416.7	18	DN40
STAR50-12F	560	383	12	DN50
STAR50-12F-280N	820	483.3	12	DN50
STAR50-15F-280	990	516.7	15	DN50
STAR50-18F-280	1000	516.7	18	DN50
STAR65-15F	1300	815	15	DN65

Product Structure

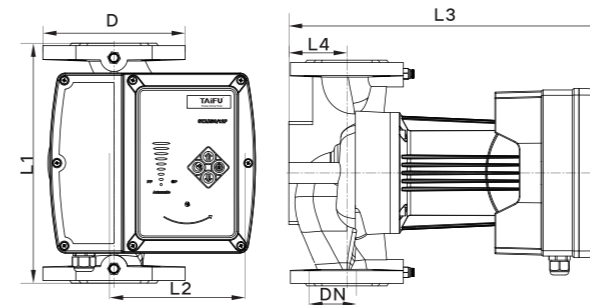


NO.	Part	NO.	Part	NO.	Part	NO.	Part
1	Pump body	5	Seal ring	9	Rotor Cover	13	Motor body
2	Impeller	6	Thrust bearing	10	O-ring	14	Electric control box
3	O-ring	7	Rotor	11	Shielding sleeve cover	15	Electric control board
4	Shield cover	8	Bearing	12	Stator	16	Bolt

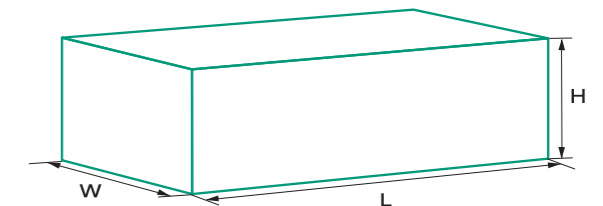
Led Display



Pump Dimensions



Packing Dimensions

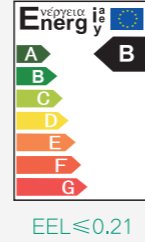


Model	L1	L2	L3	L4	D	DN
	mm	mm	mm	mm	mm	mm
STAR32-12F	220	165	388	65	150	320
STAR40-10F	220	165	388	65	150	400
STAR40-12F-220	220	165	388	65	150	400
STAR40-15F-220	220	165	388	65	150	400
STAR40-18F-220	220	165	388	65	150	400
STAR50-12F	280	165	395	72	165	500
STAR50-12F-280N	280	165	395	72	165	500
STAR50-15F-280	280	165	395	72	165	500
STAR50-18F-280	280	165	395	72	165	500
STAR65-15F	340	165	403	80	185	650

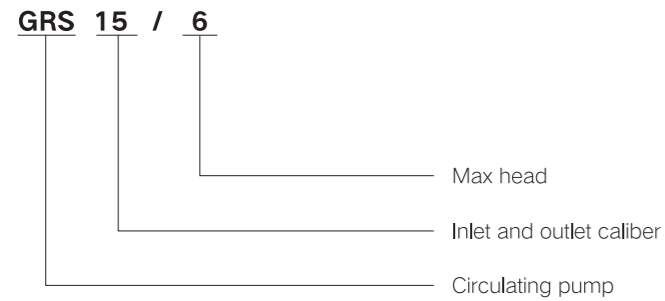
Model	L	W	H	PCS/CTN
	mm	mm	mm	
STAR32-12F	280	290	420	1
STAR40-10F	280	290	420	1
STAR40-12F-220	280	290	420	1
STAR40-15F-220	280	290	420	1
STAR40-18F-220	280	290	420	1
STAR50-12F	290	290	420	1
STAR50-12F-280N	290	290	420	1
STAR50-15F-280	290	290	420	1
STAR50-18F-280	290	290	420	1
STAR65-15F	350	290	430	1

Pipeline Circulator Pump Series

GRS15/25/32



Model Description



Working Conditions

- Supply voltage: 230V-50Hz
- Max.head: 4-8m
- Max.flow rate: 3-3.6m³/h
- Liquid temperature: +2°C to 110°C
- Power range: 88-225W
- Ambient temperature: 0°C to 40°C
- Protection class: IP44
- Insulation class: H

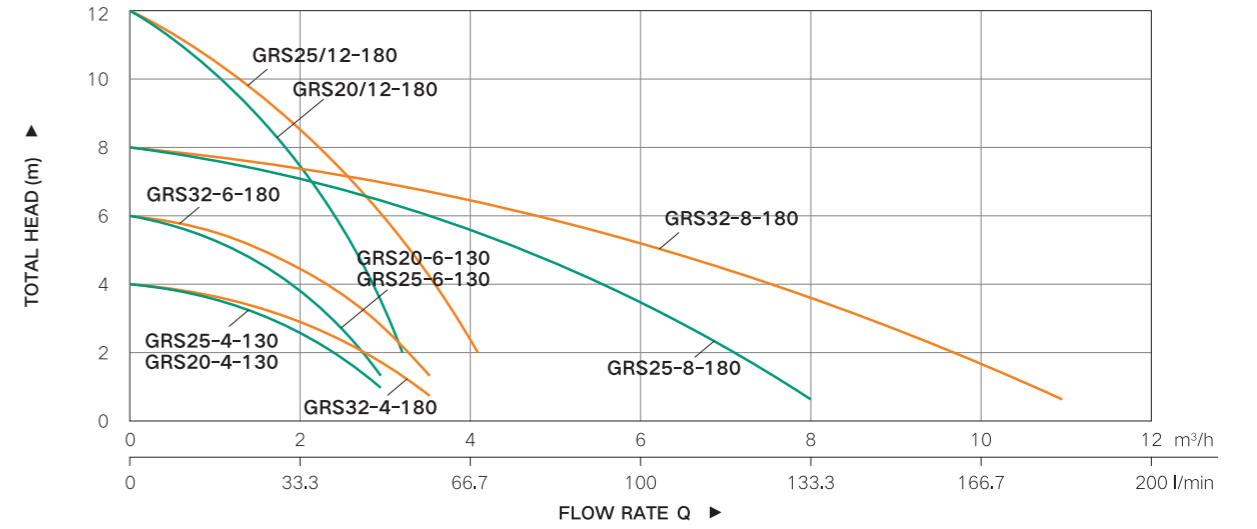
Motor and Pump Body

- The pump and system are integrated design, easy to install and suitable for use in small spaces.
- No rolling bearings, no need to add lubricating oil, no need to bother about vibration overload, very convenient maintenance.
- No motor fan, internal liquid circulation cooling, less noise, more quiet.
- No mechanical seal, more effective in eliminating liquid leakage, suitable for various liquids.

Application Range

- Hot water circulation and heating systems, air conditioning systems, industrial circulation systems, domestic water booster.

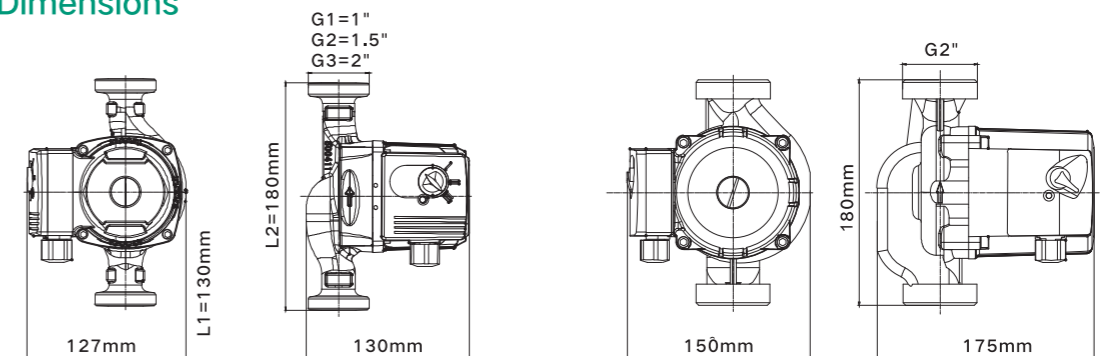
Performance Curve



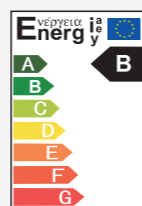
Performance Parameters

Model	Pump body length	Voltage	Power	Max. head	Max. flow rate	Inlet/Outlet
	mm					
GRS15-4-130	130	220	80/60/40	4/3/2	3.0/2.2/1.2	1"x1"
GRS25-4-130	130		80/60/40	4/3/2	3.1/2.3/1.3	1.5"x1.5"
GRS32-4-130	130		80/60/40	4/3/2	3.2/2.4/1.4	2"x2"
GRS15-4-180	180		80/60/40	4/3/2	3.0/2.2/1.2	1"x1"
GRS25-4-180	180		80/60/40	4/3/2	3.1/2.3/1.3	1.5"x1.5"
GRS32-4-180	180		80/60/40	4/3/2	3.2/2.4/1.4	2"x2"
GRS15-6-130	130		93/68/40	6/5/4	3.3/2.4/1.8	1"x1"
GRS25-6-130	130		93/68/40	6/5/4	3.4/2.5/1.9	1.5"x1.5"
GRS32-6-130	130		93/68/40	6/5/4	3.5/2.6/2.0	2"x2"
GRS15-6-180	180		93/68/40	6/5/4	3.3/2.4/1.8	1"x1"
GRS25-6-180	180		93/68/40	6/5/4	3.4/2.5/1.9	1.5"x1.5"
GRS32-6-180	180		93/68/40	6/5/4	3.5/2.6/2.0	2"x2"
GRS25-8-180	180		100/70/40	8/5/4	2.4/1.5/1.2	1.5"x1.5"
GRS25-8-180N	180		225/190/125	8/7/4	12.2/5.4/1.8	1.5"x1.5"
GRS32-8-180	180		225/190/125	8/7/4	10.2/5.4/1.8	2"x2"
GRS15/12-180	180		280/220/150	12/9/6	4.2/2.7/1.7	1"x1"
GRS25/12-180	180	280/220/150	12/9/6	4.2/2.7/1.7	1.5"x1.5"	

Pump Dimensions



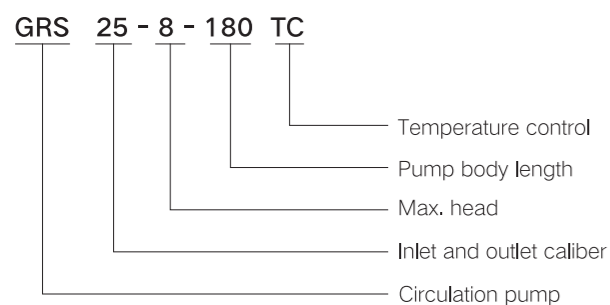
Pipeline Circulator Pump Series GRS15/25/32TC



EEL ≤ 0.21



Model Description

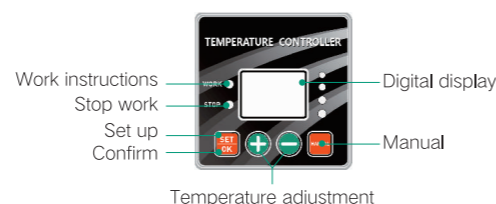


Working Conditions

- Supply voltage: 230V - 50Hz
- Max. head: 4 - 8 m
- Max. flow rate: 3 - 3.6 m³/h
- Adjustable temperature range: 0 - 99°C
- Liquid temperature: +2°C to 110°C
- Power range: 88-225W
- Ambient temperature: 0°C to 40°C
- Protection class: IP44
- Insulation class: H

Benefits

- Smart controlling
- Adjustable temperature
- Digital display
- 100% copper wire motor
- Strong power
- Low-noise running

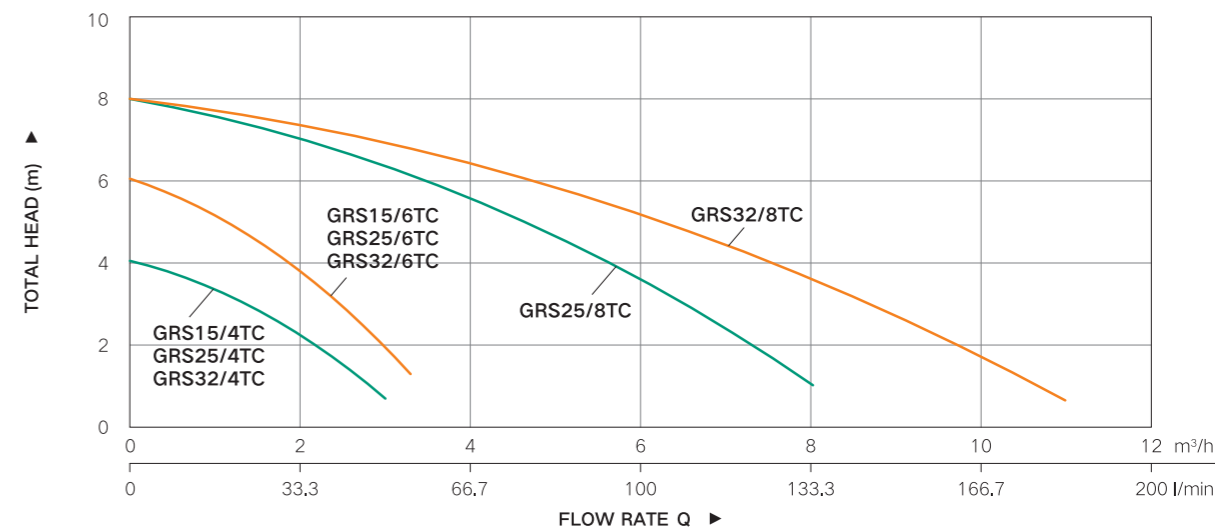


Temperature Control Concept

- When the temperature reaches the set point, the pump automatically stops running; when the temperature falls below the set point, the pump automatically turns on and runs.



Performance Curve

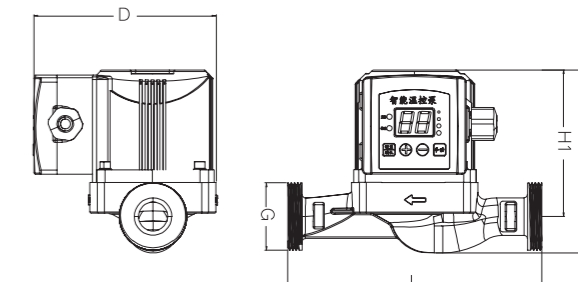


Performance Parameters

Model	Power	Max flow rate	Max.head	Connectors
	W	l/min	m	In
GRS15/4TC	80	50	4	1" to 3/4"
GRS25/4TC	80	50	4	1 1/2" to 1"
GRS32/4TC	80	50	4	2" to 1 1/4"
GRS15/6TC	100	55	6	1" to 3/4"
GRS25/6TC	100	55	6	1 1/2" to 1"
GRS32/6TC	100	55	6	2" to 1 1/4"
GRS25/8TC	225	140	8	1 1/2" to 1"
GRS32/8TC	225	170	8	2" to 1 1/4"

Pump Dimensions

Model	G	L	D	H	H1
	In	mm	mm	mm	mm
GRS15/4TC	1"	130/180	137	133	109.3
GRS25/4TC	1 1/2"	130/180	137	133	109.3
GRS32/4TC	2"	130/180	137	133	109.3
GRS15/6TC	1"	130/180	137	133	109.3
GRS25/6TC	1 1/2"	130/180	137	133	109.3
GRS32/6TC	2"	130/180	137	133	109.3
GRS25/8TC	1"	180	158.3	174.5	145
GRS32/8TC	1 1/2"	180	158.3	174.5	145



Pipeline Circulator Pump Series

GRS-Z



Brass



Cast iron

Pipeline Circulator Pump Series

GRS-Z

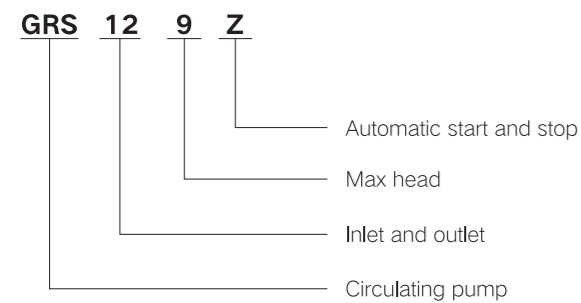


Brass



Cast iron

Model Description



Application Range

- Domestic water booster, solar booster, water heater booster, heating pipe booster, water tower water booster, industrial boiler booster.

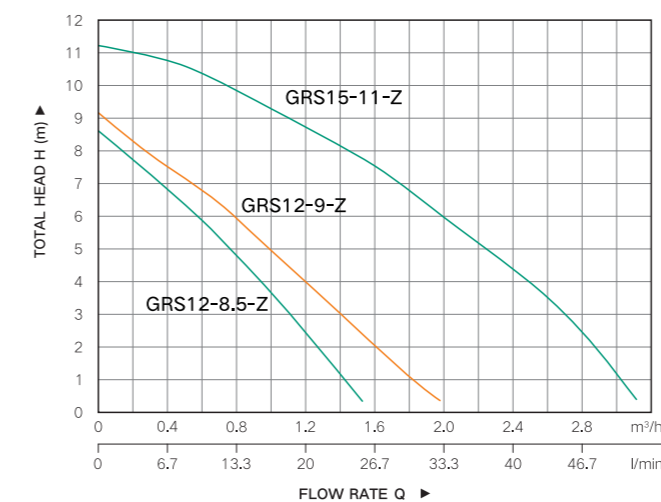
Motor and Pump Body

- The pump and system are integrated design, easy to install and suitable for use in small spaces.
- No rolling bearings, no need to add lubricating oil, no need to bother about vibration overload, very convenient maintenance.
- No motor fan, internal liquid circulation cooling, less noise, more quiet.
- No mechanical seal, more effective in eliminating liquid leakage, suitable for various liquids.
- Built-in water flow switch, with the manual, automatic and stop modes to choose and the automatic gear for automatic start/stop.

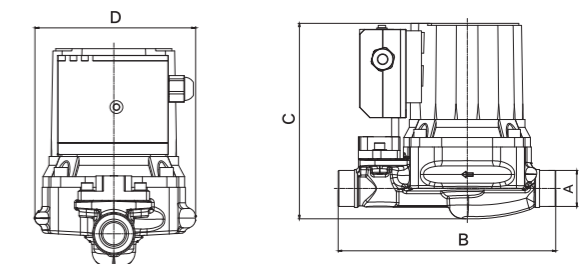
Working Conditions

- Supply voltage: 230V-50Hz
- Max. head: 8.5-11m
- Max. flow rate: 25-53.3 l/min
- Liquid temperature: +2°C to 110°C
- Power range: 100-245W
- Ambient temperature: 0°C to 40°C
- Enclosure protection class: IP44
- Insulation class: H

Performance Curve



Pump Dimensions



Model	A	B	C	D
	In	mm	mm	mm
GRS12/8.5-Z	3/4"	160	133	105.5
GRS12/9-Z	3/4"	160	144	105.5
GRS15/11-Z	1"	200	170	130

Performance Parameters

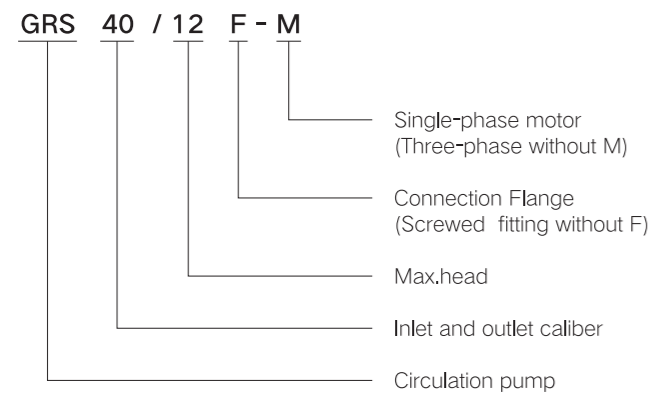
Model 3 phase	Power	Max flow rate	Max.head	Inlet/Outlet
	W	l/min	m	In
GRS12/8.5-Z	100	25	8.5	3/4"x3/4"
GRS12/9-Z	120	30	9	3/4"x3/4"
GRS15/11-Z	245	53.3	11	1"x1"

Pipeline Circulator Pump Series

GRS-F-M



Model Meaning



Applications

- Hot water circulation and heating systems
- Air conditioning system
- Industrial circulation systems
- Domestic water booster

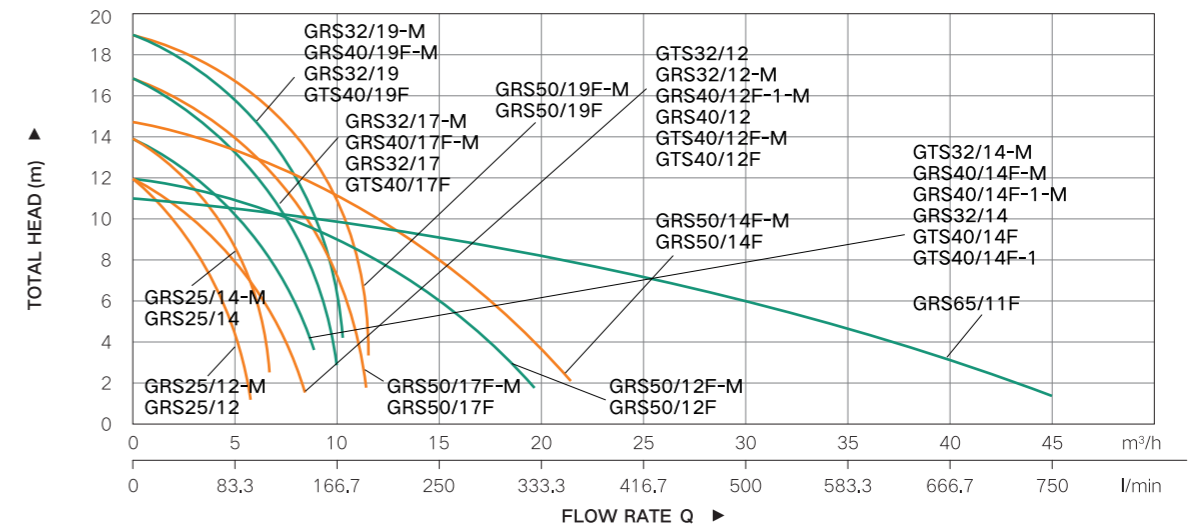
Advantages & Features

- The pump and system are integrated design, easy to install and suitable for use in small spaces.
- No rolling bearings, no need to add lubricating oil, no need to bother about vibration overload, very convenient maintenance.
- No motor fan, internal liquid circulation cooling, pump noise is smaller and quieter.
- No mechanical seal, more effective in eliminate liquid leakage, suitable for variety liquids.
- Excellent performance, high flow rate, and high lift.

Working Conditions

- Liquid temperature: 2°C to 110°C
- Ambient temperature: 0 °C to 40°C
- Maximum system pressure: 1M
- Protection class: IP44
- Supply voltage/frequency: 220V-50/60Hz
- Insulation class: H
- Adaptive medium: clear water

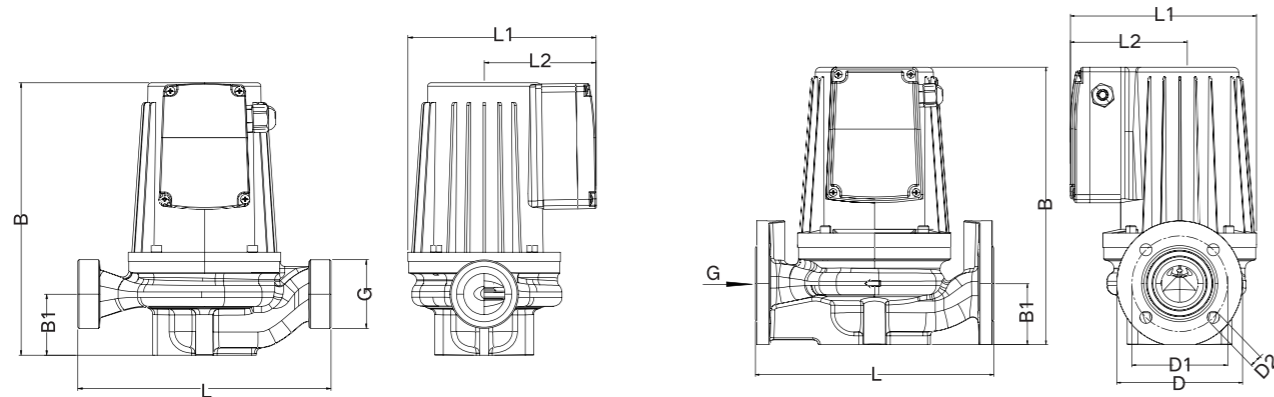
Performance Curve



Performance Parameters

Model	Pump Body Length	Voltage	Current	Power	Rated head	Rated Flow	Max.head	Max. Flow Rate
	mm	V	A	W	m	m³/h	m	m³/h
GRS25/12-M	190	220	1.9	400	6	5	12	6
GRS32/12-M	220	220	1.9	400	5.5	6	12	9
GRS40/12F-1-M	220	220	1.9	600	7	5	12	9
GRS40/12F-M	220	220	1.9	600	7	5	12	9
GRS25/14-M	190	220	3	600	9.5	5	14	6.8
GRS32/14-M	220	220	3	600	9.5	5	14	8
GRS40/14F-1-M	220	220	3	600	9.5	6	14	9
GRS40/14F-M	220	220	3	600	9	6	14	9
GRS25/12	190	380	1.1	400	6	5	12	6
GRS32/12	220	380	1.1	400	5.5	6	12	8
GRS40/12F-1	220	380	1.1	400	7	5	12	9
GRS40/12F	220	380	1.1	400	7	5	12	9
GRS25/14	190	380	1.6	600	9.5	5	14	6.8
GRS32/14	220	380	1.6	600	9.5	5	14	8
GRS40/14F-1	220	380	1.6	550	9.5	6	14	9
GRS40/14F	220	380	1.6	550	9	6	14	9
GRS32/17-M	250	220	4.2	700	12	7	17	10
GRS40/17F-M	250	220	4.2	700	12	7	17	10
GRS50/17F-M	280	220	4.2	700	12	10	17	12
GRS32/19-M	250	220	5.1	900	14	7	19	10
GRS40/19F-M	250	220	5.1	900	14	7	19	10
GRS50/19F-M	280	220	5.1	900	12	10	19	15
GRS32/17	250	380	1.9	700	12	7	17	10
GRS40/17F	250	380	1.9	700	12	7	17	10
GRS50/17F	280	380	1.9	700	12	10	17	12
GRS32/19	250	380	2.4	900	14	7	19	10
GRS40/19F	250	380	2.4	900	14	7	19	10
GRS50/19F	280	380	2.4	900	12	10	19	15
GRS50/12F-M	280	220	4.9	1100	7	15	12	18
GRS50/15F-M	280	220	5.4	1100	11	21	15	21
GRS50/12F	280	380	2.8	1100	7	15	12	18
GRS50/15F	280	380	3.2	1100	11	15	15	21
GRS65-11F	340	380	2.8	1500	6	45	11	45

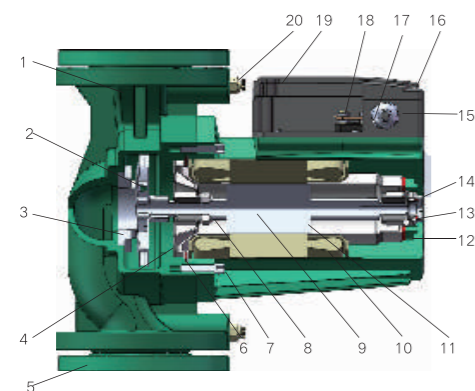
Pump Dimensions



Model	G	L	L1	L2	B	B1
	In	mm	mm	mm	mm	mm
GRS25/12	1-1/2"	190	163.5	97.5	237	53
GRS25/12-M	1-1/2"	190	163.5	97.5	237	53
GRS25/14	1-1/2"	190	163.5	97.5	237	53
GRS25/14-M	1-1/2"	190	163.5	97.5	237	53
GRS32/12	2"	220	163.5	97.5	237	53
GRS32/12-M	2"	220	163.5	97.5	237	53
GRS32/14	2"	220	163.5	97.5	237	53
GRS32/14-M	2"	220	163.5	97.5	237	53
GRS32/17	2"	250	195	114.5	291	64
GRS32/17-M	2"	250	195	114.5	291	64
GRS32/19	2"	250	195	114.5	291	64
GRS32/19-M	2"	250	195	114.5	291	64

Model	G	L	L1	L2	B	B1	B	B1	B2
	mm	mm	mm	mm	mm	mm	mm	mm	mm
GRS40/12F	40	220	163.5	97.5	237	53	130	97	13
GRS40/12F-M	40	220	163.5	97.5	237	53	130	97	13
GRS40/12F-1	40	220	163.5	97.5	237	53	130	97	13
GRS40/12F-1-M	40	220	163.5	97.5	237	53	130	97	13
GRS40/14F	40	220	163.5	97.5	237	53	130	97	13
GRS40/14F-M	40	220	163.5	97.5	237	53	130	97	13
GRS40/14F-1	40	220	163.5	97.5	237	53	130	97	13
GRS40/14F-1-M	40	220	163.5	97.5	237	53	130	97	13
GRS40/17F	40	250	195	114.5	291	64	130	97	13
GRS40/17F-M	40	250	195	114.5	291	64	130	97	13
GRS40/19F	40	250	195	114.5	291	64	130	97	13
GRS40/19F-M	40	250	195	114.5	291	64	130	97	13
GRS50/17F	50	280	202	115.5	308	76.5	140	110	18
GRS50/19F	50	280	202	115.5	308	76.5	140	110	18
GRS50/17F-M	50	280	202	115.5	308	76.5	140	110	18
GRS50/19F-M	50	280	202	115.5	308	76.5	140	110	18
GRS50/12F	50	280	205	115.5	315	76.5	165	125	18
GRS50/12F-M	50	280	205	115.5	315	76.5	165	125	18
GRS50/15F	50	280	205	115.5	315	76.5	165	125	18
GRS50/15F-M	50	280	205	115.5	315	76.5	165	125	18
GRS65/11F	65	340	225	126	330	80	188	145	18

Product Structure

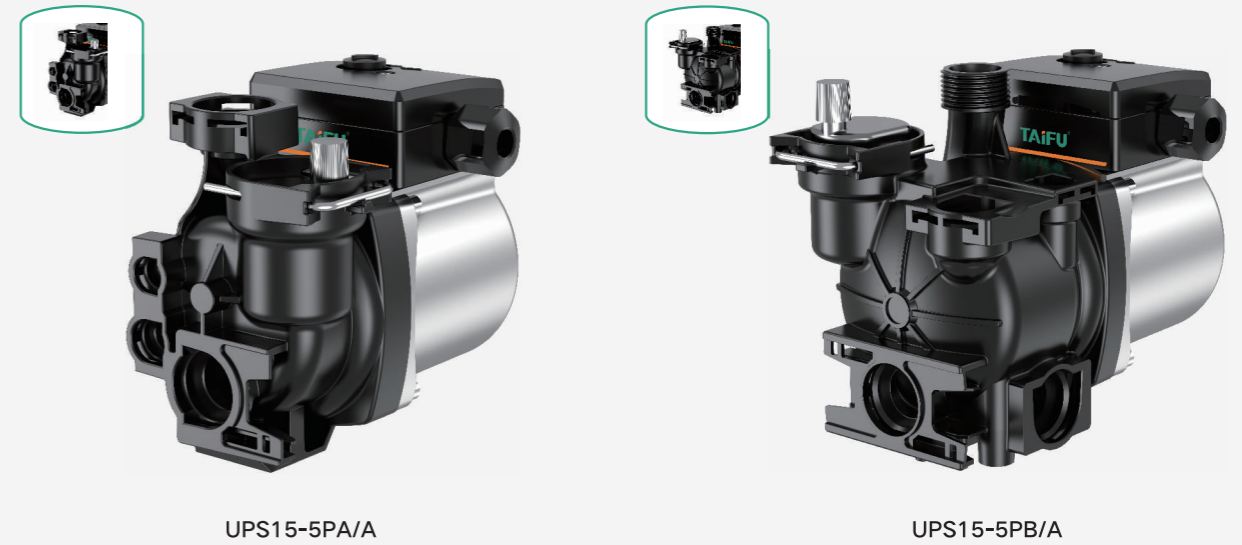


NO.	Part	NO.	Part
1	Pump body	11	Rotor
2	Impeller	12	Water washer
3	Sealing ring	13	O-ring
4	Shield cover	14	Air screw
5	Flange	15	Sheath
6	Pump body gasket	16	Bolt
7	Bolt	17	Electric control box
8	Locking ring	18	Terminal block
9	Rotor shaft	19	Terminal board cover
10	Coil	20	Venting screw

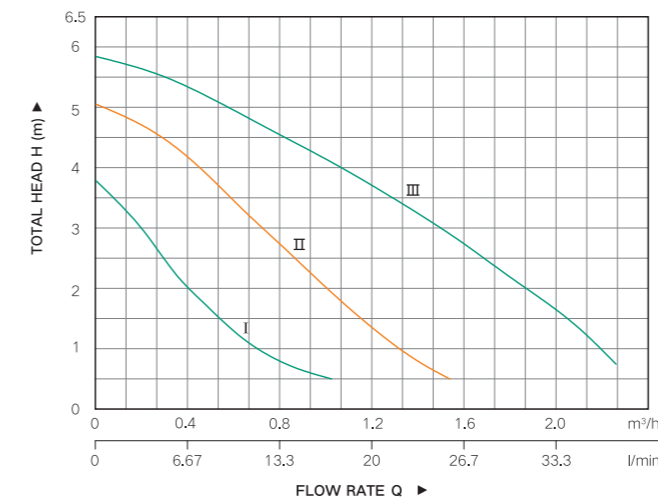
Boiler Pump Series

UPSP-A

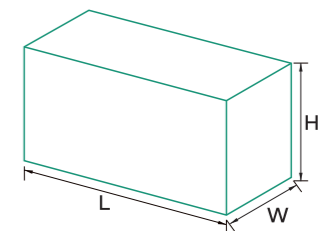
Two types of pump body for selection



Performance Curve



Packing Dimensions



Model	L	W	H	PCS/CTN
	mm	mm	mm	
UPS15-5PA(B)/A	480	350	170	8
UPS15-6PA(B)/A	480	350	170	8

Performance Parameters

Model	Input power	Max power	Max flow rate	Max head	Temperature	Water pressure	Inlet/Outlet
	V/Hz	W	l/min	m	°C	bar	In
UPS15-5PA(B)/A	220/50	90	36	5	0-95	3	3/4"
UPS15-6PA(B)/A	220/50	95	38	6	0-95	3	3/4"

Boiler Pump Series

UPSP-B



UPS15-6PA/A



UPS15-6PB/B

Boiler Pump Series

UPM

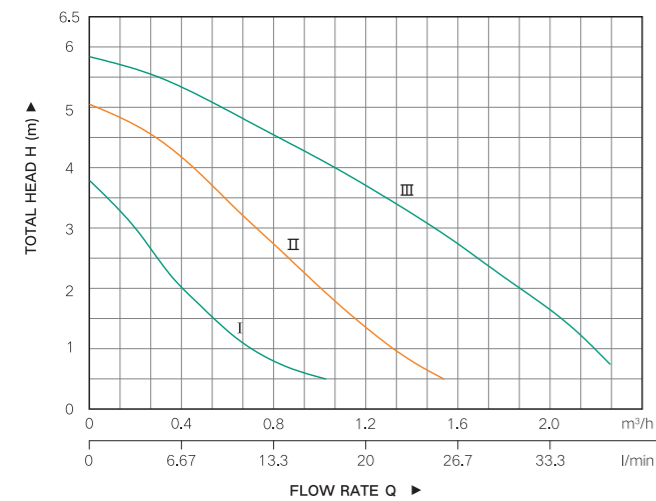


UPM15-6PA/A

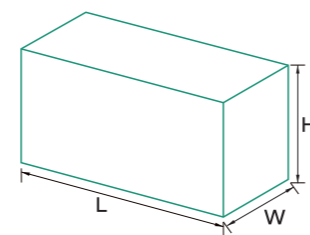


UPM15-6PB/A

Performance Curve



Packing Dimensions

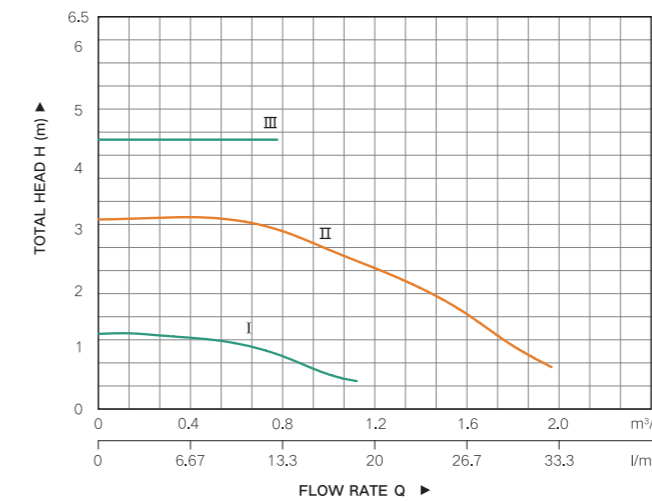


Model	L	W	H	PCS/CTN
	mm	mm	mm	
UPS15-5PA(B)/B	480	350	170	8
UPS15-6PA(B)/B	480	350	170	8

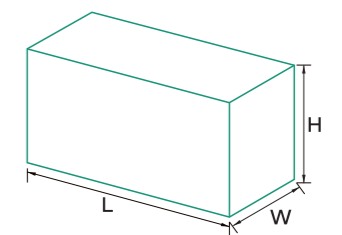
Performance Parameters

Model	Input power	Max power	Max flow rate	Max head	Temperature	Water pressure	Inlet/Outlet
	V/Hz	W	l/min	m	°C	bar	In
UPS15-5PA(B)/B	220/50	90	36	5	0~95	3	3/4"
UPS15-6PA(B)/B	220/50	95	38	6	0~95	3	3/4"

Performance Curve



Packing Dimensions



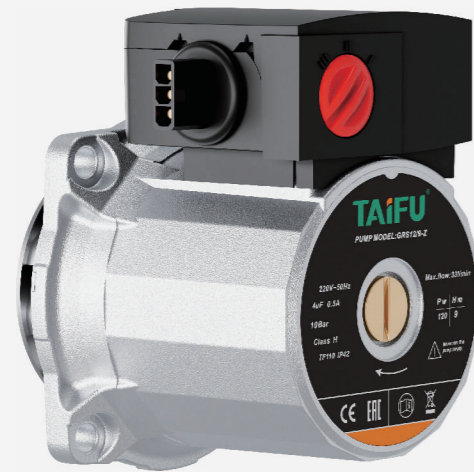
Model	L	W	H	PCS/CTN
	mm	mm	mm	
UPM15-5PA(B)/A	480	350	170	8
UPM15-6PA(B)/A	480	350	170	8

Performance Parameters

Model	Input power	Max power	Max flow rate	Max head	Temperature	Water pressure	Inlet/Outlet
	V/Hz	W	l/min	m	°C	bar	In
UPM15-5PA(B)/A	220/50	45	36	5	0~95	3	3/4"
UPM15-6PA(B)/A	220/50	45	38	6	0~95	3	3/4"

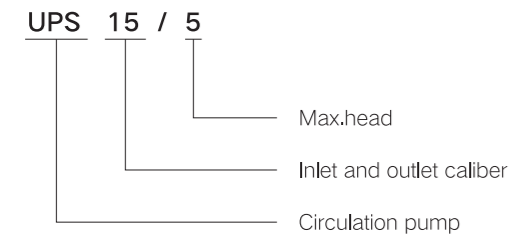
Boiler Pump Series

UPS



- Long Life
- Super Silent
- Heat-resistance
- Convenient Installation

Model Meaning



Working Conditions

- Liquid temperature: 2°C to 110°C
- Ambient temperature: 0°C to 40°C
- Insulation Class: H
- Supply Voltage: 220V-50Hz
- System pressure: 1Mpa(max)
- Medium requirements: Clear water

Advantages & Features

Long Life

The inner cavity is cooled by pumping liquid to delay insulation aging. High hardness and wear resistant ceramic bearing compared with the previous graphite sleeve is stronger, more wear resistant and offers a longer service life.

Super Silent

The bushing is lubricated by the pumped liquid for lower noise

Heat-resistance

Impeller and motor made of high temperature resistant materials. suitable for conveying the temperature of 2°C-110°C liquid, used for domestic hot water circulation and pressurization.

Convenient Installation

The pump and system are integrated design, space-saving and easy to install and suitable for use in small space.

Multi-Speed

Pump has three speeds that can be manually adjusted to meet different performance levels. Pump performance needs can change based on the configuration of a plumbing system or to meet periods of low and high demand.

Applications



Domestic Water Booster



Hot Water Circulation and Heating System

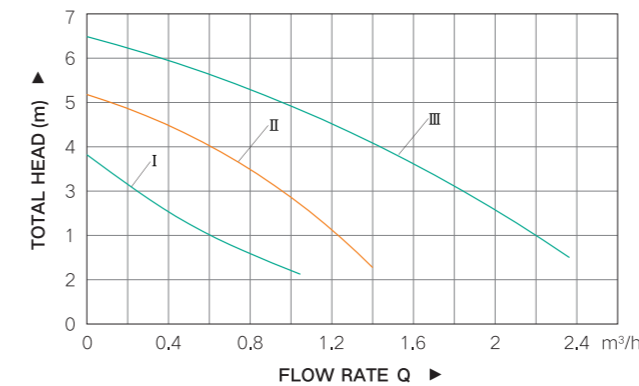


Industrial Circulation Systems



Air Conditioning System

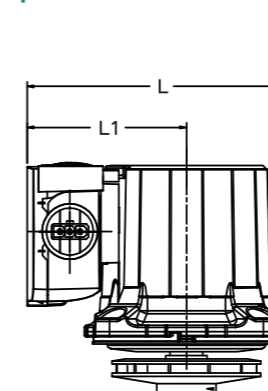
Performance Curve



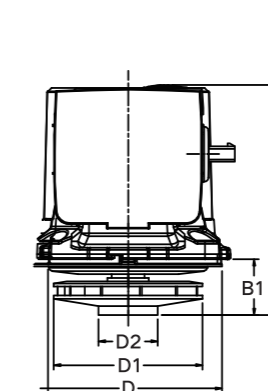
Performance Parameters

Model	Max flow rate	Max.head	Power	Voltage	Current
	m³/h	m	W	V	A
UPS15/5	2.33/1.45/0.95	6.5/5.1/3.8	86/64/32	220	0.4/0.3/0.2

Pump Dimensions



P1: UPS15/5

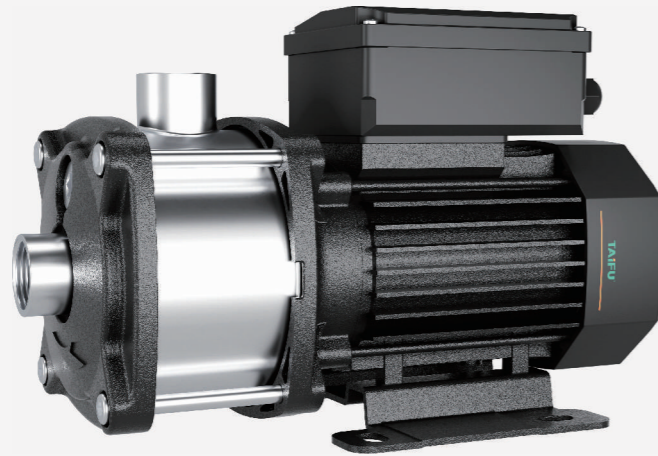


P2: P1W

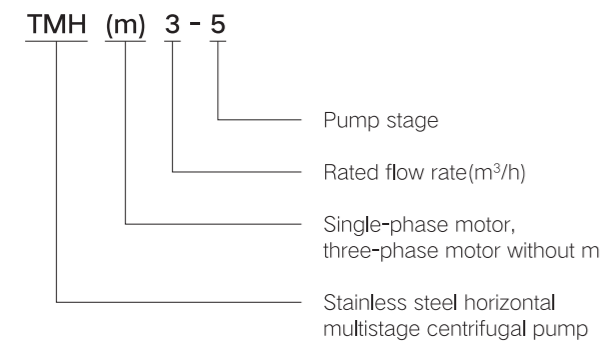
Model	L	L1	L2	L3	B	B1	D	D1	D2	D3	D4	D5
	mm	mm	mm	mm	mm	mm	mm	mm	mm	mm	mm	mm
UPS15/5	119.5	73			105.2	25.6	86	68	68.6			
P1W	101.6	97.9	84.2	78.7			86	68	25.6	21.6	19.6	34.9

Stainless Steel Horizontal Multistage Centrifugal Pump

TMH



Model Meaning



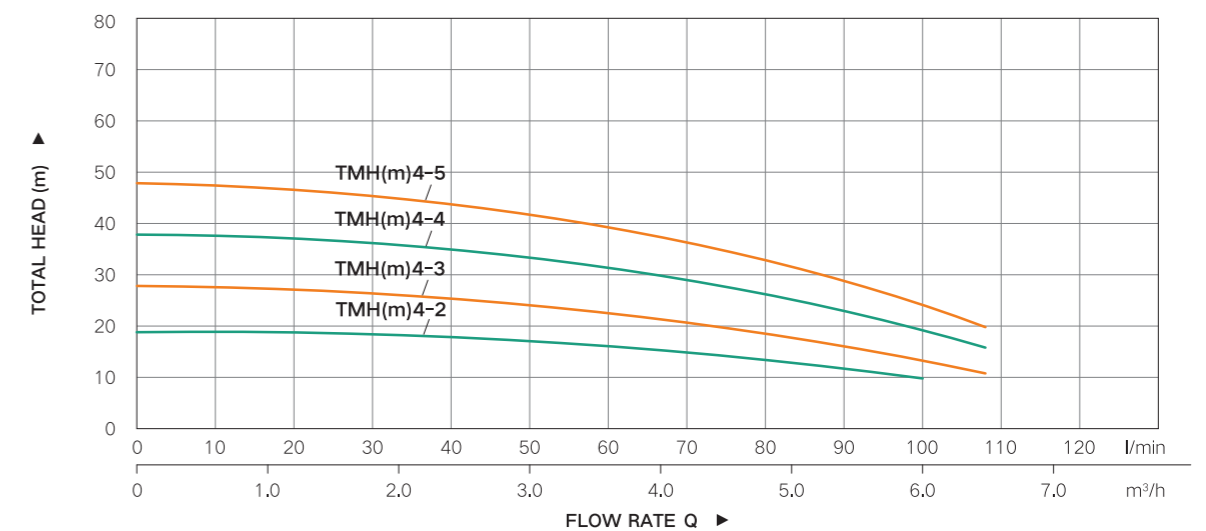
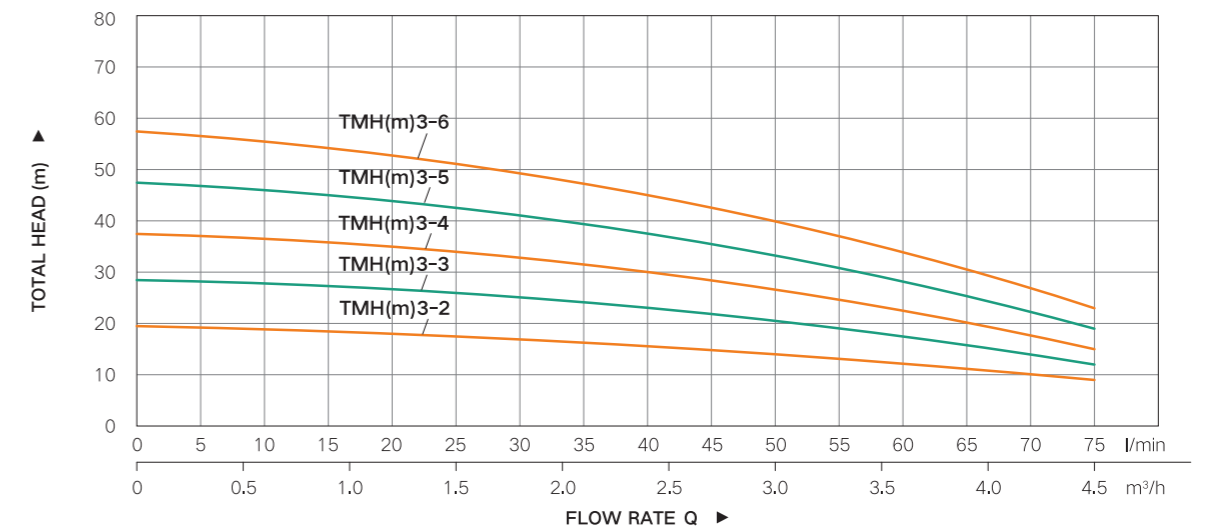
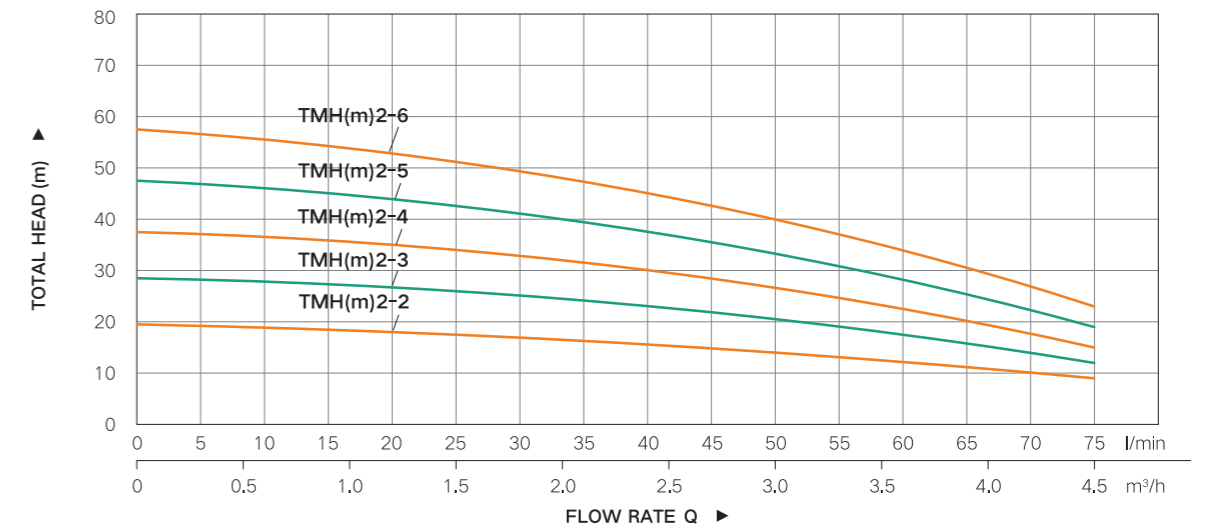
Advantages & Features

- Fully enclosed, air-cooled, squirrel-cage motor
- Working mode: S1
- Protection class: IPX4
- Insulation class: F
- Standard voltage: single phase 220V/50Hz
three phase 380V/50Hz
- Single phase motor equip with a built-in thermal overload protector, three phase motor must be connected to motor starter according to local regulations
- Impeller, pump body, diffuser: stainless steel 304 (stainless steel 316 for selection)

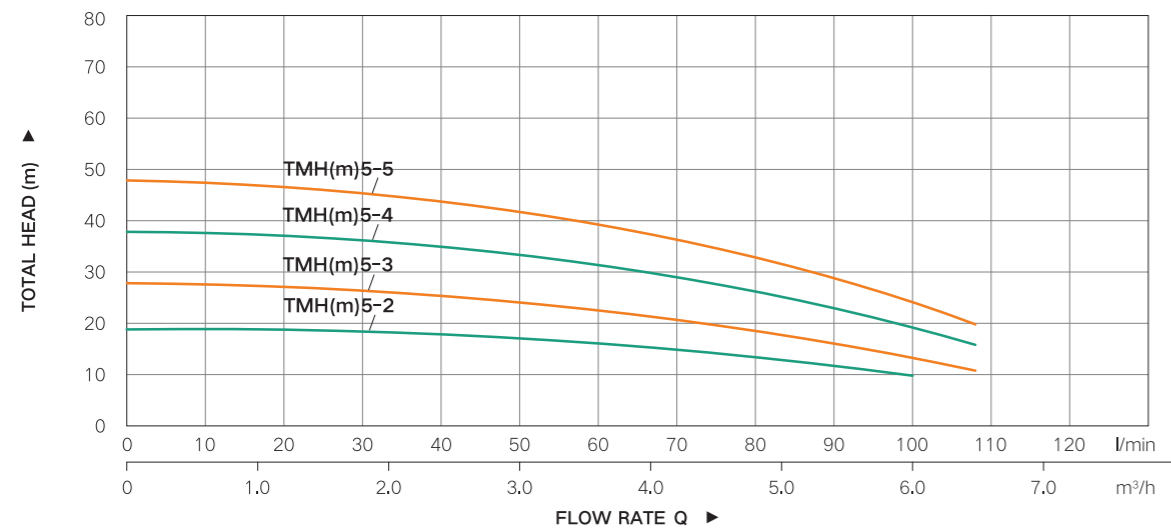
Working Conditions

- Thin and clean liquid that cannot react chemically with the pump material, non inflammable and explosive liquid without solid particles and fibers.
- When the density of the conveying medium is bigger than clean water, a big power motor is required
- Medium temperature range: 0°C~60°C
- Maximum ambient temperature: +40°C
- Maximum installation height: related to factors such as pump NPSH (cavitation margin), medium temperature, sea level height of installation location, and inlet pipeline loss and so on
- Maximum working pressure: 10bar
- Maximum inlet pressure: limited by the maximum working pressure

Performance Curve



Performance Curve

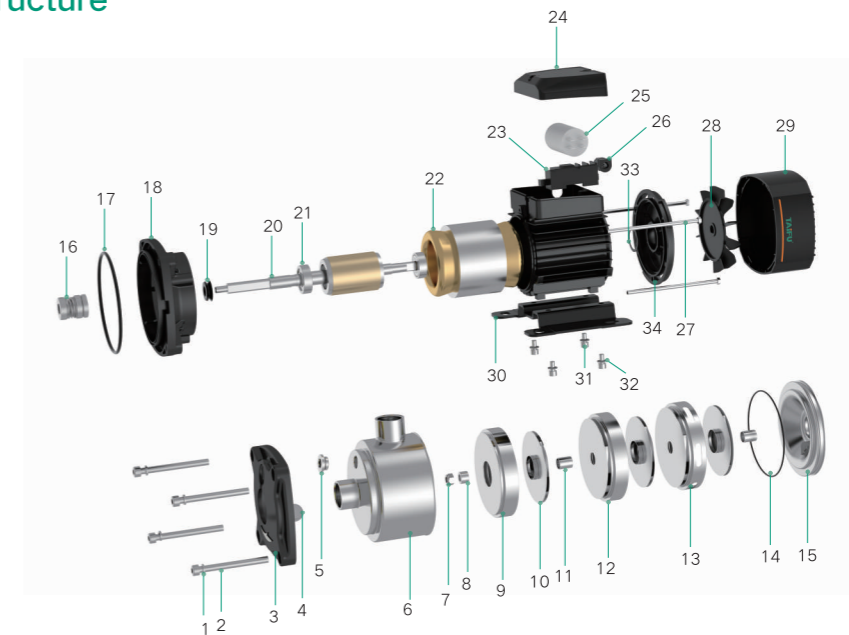


Performance Parameters

Model	Power		Inlet/Outlet In	Q(m³/h) Q(l/min)	0	0.5	1	1.5	2	2.5	3	3.5	4	4.5
	kW	HP			0	8.3	16.7	25	33.3	41.7	50	58.3	66.7	75
TMH(m)2-2	0.25	0.3	1"x1"	H(m)	19.5	18.5	18	17.5	16.5	15	14.5	13	11	9
TMH(m)2-3	0.37	0.5	1"x1"		28.5	27.5	26	25.5	24.5	23	21	18	16	12
TMH(m)2-4	0.55	0.75	1"x1"		37.5	36.5	35.5	34	32	30.5	28	25	21	15
TMH(m)2-5	0.55	0.75	1"x1"		47.5	46	44.5	42.5	40	37.5	35	30	25	19
TMH(m)2-6	0.75	1.0	1"x1"		57.5	55.5	53.5	52	48	45	41	35	31	23
TMH(m)3-2	0.25	0.3	1"x1"		19.5	18.5	18	17.5	16.5	15	14.5	13	11	9
TMH(m)3-3	0.37	0.5	1"x1"		28.5	27.5	26	25.5	24.5	23	21	18	16	12
TMH(m)3-4	0.55	0.75	1"x1"		37.5	36.5	35.5	34	32	30.5	28	25	21	15
TMH(m)3-5	0.55	0.75	1"x1"		47.5	46	44.5	42.5	40	37.5	35	30	25	19
TMH(m)3-6	0.75	1.0	1"x1"		57.5	55.5	53.5	52	48	45	41	35	31	23

Model	Power		Inlet/Outlet In	Q(m³/h) Q(l/min)	0	1	2	3	4	5	6	6.5
	kW	HP			0	16.7	33.3	50	33.3	83.3	100	108
TMH(m)4-2	0.37	0.5	1.2"x1"	H(m)	19	18	17.5	16.5	15.5	13	10	
TMH(m)4-3	0.55	0.75	1.2"x1"		28	26.5	25	23	21.5	18	14	11
TMH(m)4-4	0.75	1.0	1.2"x1"		38	36	35	33	30	25	18	16
TMH(m)4-5	0.75	1.0	1.2"x1"		48	46	43	40	37.5	32	24	20
TMH(m)5-2	0.37	0.5	1.2"x1"		19	18	17.5	16.5	15.5	13	10	
TMH(m)5-3	0.55	0.75	1.2"x1"		28	26.5	25	23	21.5	18	14	11
TMH(m)5-4	0.75	1.0	1.2"x1"		38	36	35	33	30	25	18	16
TMH(m)5-5	0.75	1.0	1.2"x1"		48	46	43	40	37.5	32	24	20

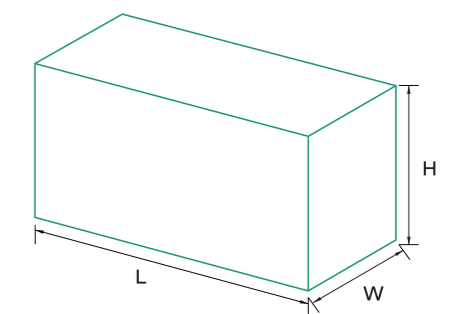
Product Structure



NO.	Part	NO.	Part	NO.	Part	NO.	Part
1	Stud	10	Impeller	19	Water washer	28	Fan
2	Spring washer	11	Bearing sheath	20	Rotor	29	Fan cover
3	Pump cover	12	Second stage difussor	21	Bearing	30	Base board
4	Screw	13	End stage difussor	22	Stator	31	Nut
5	Screw	14	O-ring	23	Terminal board	32	Gasket
6	Pump body	15	Seal seat	24	Terminal box	33	Spring washer
7	Locknut	16	Mechanical seal	25	Capacitor	34	Motor end cover
8	Bearing sheath	17	O-ring	26	Cable sheath		
9	First stage difussor	18	Motor front cover	27	Screw		

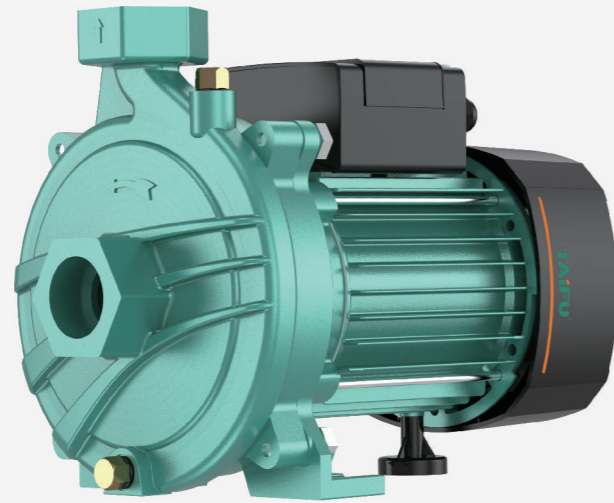
Package Dimensions

Model	L	W	H
	mm	mm	mm
TMH(m)2-2	369	184	252
TMH(m)2-3	369	184	252
TMH(m)2-4	386	184	252
TMH(m)2-5	405	184	252
TMH(m)2-6	458	199	272
TMH(m)4-2	369	184	252
TMH(m)4-3	369	184	252
TMH(m)4-4	422	199	272
TMH(m)4-5	440	199	272

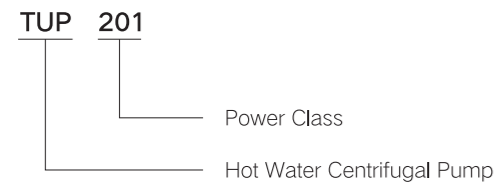


TUP Hot Water Centrifugal Pump

TUP



Model Meaning



Working Conditions

- Ambient temperature does not exceed +40°C
- Maximum working pressure: 0.8Mpa
- The medium temperature range: 0~+90°C
- The maximum voltage fluctuation value does not exceed $\pm 10\%$ of the rated value.

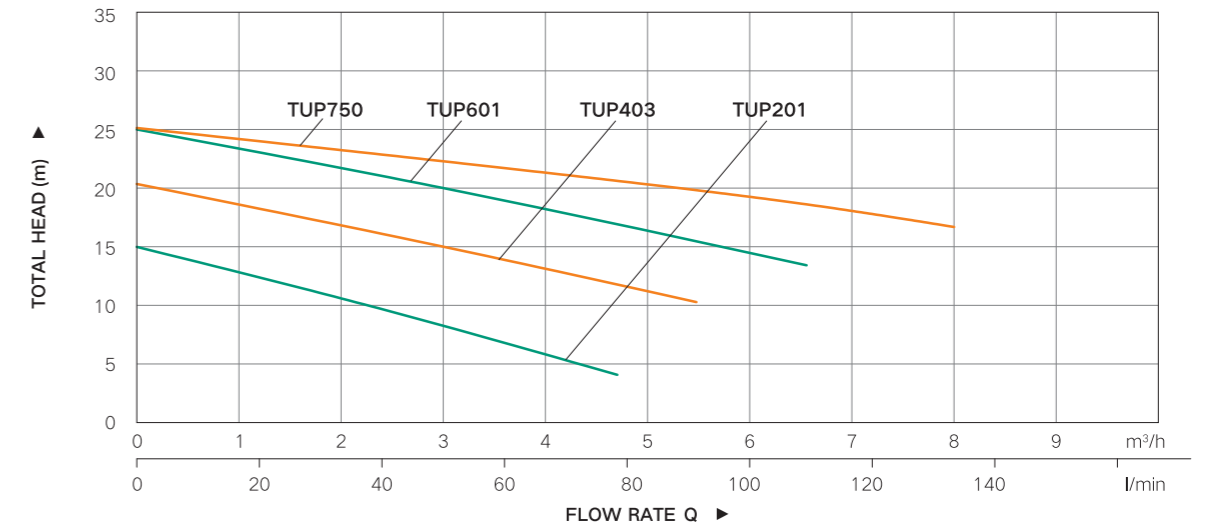
Application Range

- Solar Energy Booster, Water Heater Pressurization, Air Energy Booster, Hot Water Booster.

Advantages & Features

- Wide applications: Apply to industrial and urban water supply, high-rise building pressure boosting, fire-fighting systems, garden irrigation, long-distance water transport and other fields. Widely used for HVAC, hot and cold water circulating pressure boosting and supporting facilities, etc.
- Corrosion-resistant rotor shaft: The rotor shaft is welded with high quality No.45 steel and 304 stainless steel.
- Corrosion-resistant pump body: Cast iron pump body with electrophoretic anti-rust treatment.
- Long motor service life: F-class insulation, temperature resistance of 155 degrees.
- Special machine seal: The product adopts special machine seal to prevent machine seal adsorption.
- Enhanced material: PPO reinforced eco-friendly impeller.
- Low noise: Low vibration and electromagnetic noise to offer users a better experience.

Performance Curves

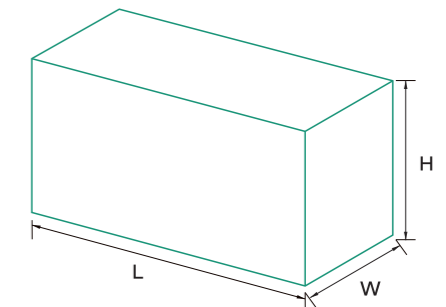


Performance Parameters

Model	Max. flow rate	Rated flow rate	Max. head	Rated head	Power	Voltage	Inlet/Outlet
	m³/h	m³/h	m	m	kW	V	In
TUP201	4.8	2.3	15	10	0.2	220	1"
TUP403	5.4	3	21	15	0.4	220	1"/1.2"
TUP601	6.9	3	25	20	0.6	220	1"
TUP750	8	6.6	25	17.5	0.75	220	1.2"

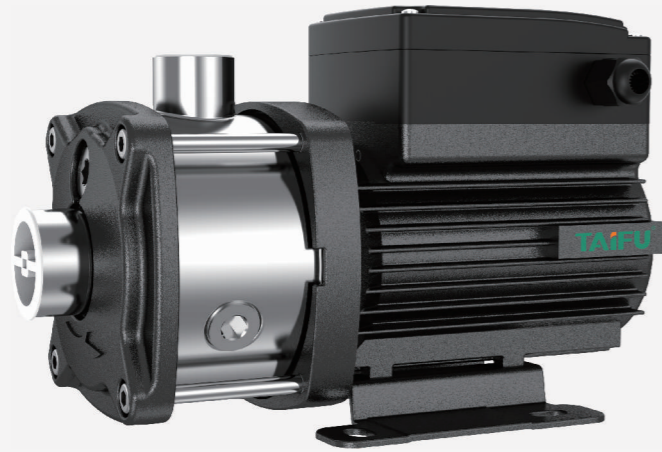
Package Dimensions

Model	L	W	H
	mm	mm	mm
TUP201	300	180	225
TUP403	350	210	250
TUP601	350	210	250
TUP750	350	210	250

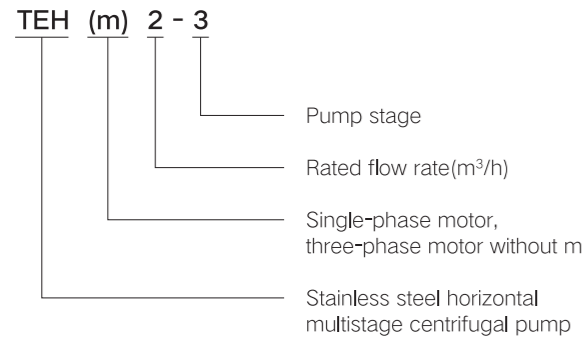


Stainless Steel Horizontal Multistage Centrifugal Pump

TEH



Model Meaning



Advantages & Features

- Stator coil potting technology, anti-condensation
- Shielded motor with wet rotor technology, low noise
- No mechanical seal, no leakage
- No rolling bearing adopts sliding bearing, maintenance free.
- High-quality stainless steel overcurrent parts, corrosion-resistant and anti-aging.

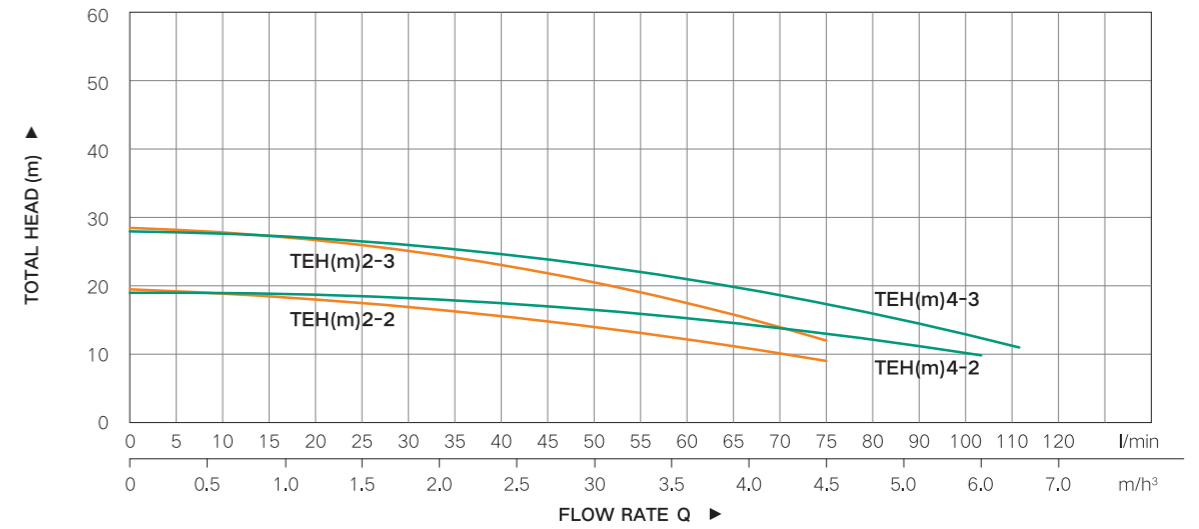
Applications

- Air conditioning systems, cooling systems, industrial cleaning, water supply and booster systems, water treatment systems data centers and energy storage temperature control systems field.

Working Conditions

- Liquid temperature: -40°C to 95°C
- Ambient temperature: -40°C to 55°C
- Maximum system pressure: 10bar
- Protection class: IP55
- Supply voltage/frequency: Single-phase 220V/50Hz
Three-phase 380V/50Hz
- Insulation class: F
- Applicable medium: Thin and clean liquid that cannot react chemically with the pump material, non inflammable and explosive liquid without solid particles and fibers. (more applicable to the glycol solution with a concentration of ≤55%)
- Maximum installation height: related to the pump's NPSH (cavitation margin), media temperature, installation location of the sea level height and inlet pipeline loss and other factors

Performance Curves



Performance Parameters

Model	Power		Inlet/Outlet In	Q(m³/h)	Q(l/min)												
	kW	HP			0	0.5	1	1.5	2	2.5	3	3.5	4	4.5			
TEH(m)2-2	0.25	0.3	1"x1"	H(m)	0	8.3	16.7	25	33.3	41.7	50	58.3	66.7	75			
TEH(m)2-3	0.37	0.5	1"x1"		19.5	18.5	18	17.5	16.5	15	14.5	13	11	9			
					28.5	27.5	26	25.5	24.5	23	21	18	16	12			

Model	Power		Inlet/Outlet In	Q(m³/h)	Q(l/min)							
	kW	HP			0	1	2	3	4	5	6	6.5
TEH(m)4-2	0.37	0.5	1.2"x1"	H(m)	0	16.7	33.3	50	33.3	83.3	100	108
TEH(m)4-3	0.55	0.75	1.2"x1"		19	18	17.5	16.5	15.5	13	10	
					28	26.5	25	23	21.5	18	14	11

Package Dimensions

Model	L	W	H
	mm	mm	mm
TEHm2-2	369	184	252
TEHm2-3	369	184	252
TEHm4-2	369	184	252
TEHm4-3	369	184	252

